

#### 4/5 Leslie Place Tuart Hill WA

3  2  2 

Welcome to this delightful home, versatile for first-home buyers, downsizers, families, or investors! Thoughtfully designed with multiple living areas, this property creates a warm and inviting atmosphere, making it an ideal space to relax and enjoy.

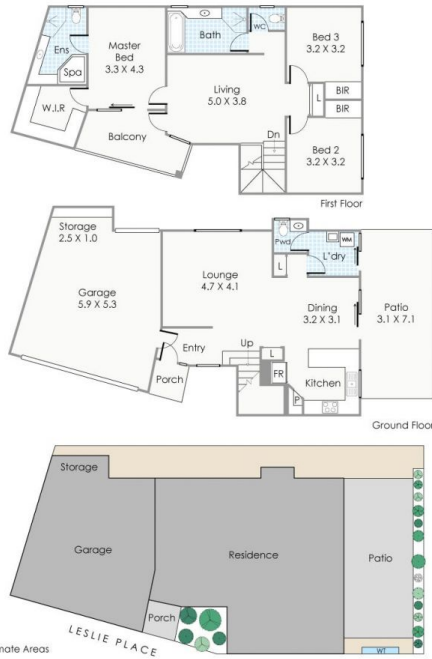
Step into the modern kitchen, complete with solid timber flooring, a plumbed fridge, gas cooking facilities, and a convenient breakfast bar. Ample storage and quality finishes make this kitchen both stylish and practical. The open-plan area downstairs enjoys year-round comfort with a split-system air conditioning unit, while electric shutters and roller blinds throughout provide enhanced privacy and comfort.

[For full version visit the website](https://www.abelproperty.com.au/81733)

<b>Type</b>	: Villa
<b>Price</b>	: Offers - Contact Agent
<b>Building Size</b>	: 167 sqm
<b>Land Size</b>	: 284 sqm
<b>View</b>	: <a href="https://www.abelproperty.com.au/81733">https://www.abelproperty.com.au/81733</a> 01



**Dominic Ferraro**  
08 9208 1999



#### Approximate Areas

Ground Floor:	71m <sup>2</sup>
First Floor:	96m <sup>2</sup>
Garage:	38m <sup>2</sup>
Store:	2m <sup>2</sup>
Patio:	22m <sup>2</sup>
Balcony:	10m <sup>2</sup>
Porch:	3m <sup>2</sup>
<b>Total Area:</b>	<b>242m<sup>2</sup></b>

The floor plan is for illustration purposes only to show the layout of the property. It is not a legal document and should not be used for any legal purposes. The floor plan is not to scale and the areas are approximate. The floor plan is not to be used for any other purposes.

➤ 4/5 Leslie Place, Tuat Hill