



8/26 Ambrose Street Innaloo WA

1 1 1

Welcome to this 1-bedroom, 1-bathroom apartment in a modern complex in the heart of Innaloo. A quiet suburban location with parklands at the end of the street, shopping centre and restaurants conveniently located around the corner.

Modern open-plan living space with tiled floors, the Kitchen features stone bench tops. Subway tile splashbacks and plenty of storage space. A reverse cycle split system aircon is located in the living room which leads out through sliding doors to your own private courtyard.

The large bedroom is a tranquil retreat with quality carpet floors, mirrored built-in wardrobes and a beautiful green outlook.

[For full version visit the website](https://www.abelproperty.com.au/8168008)

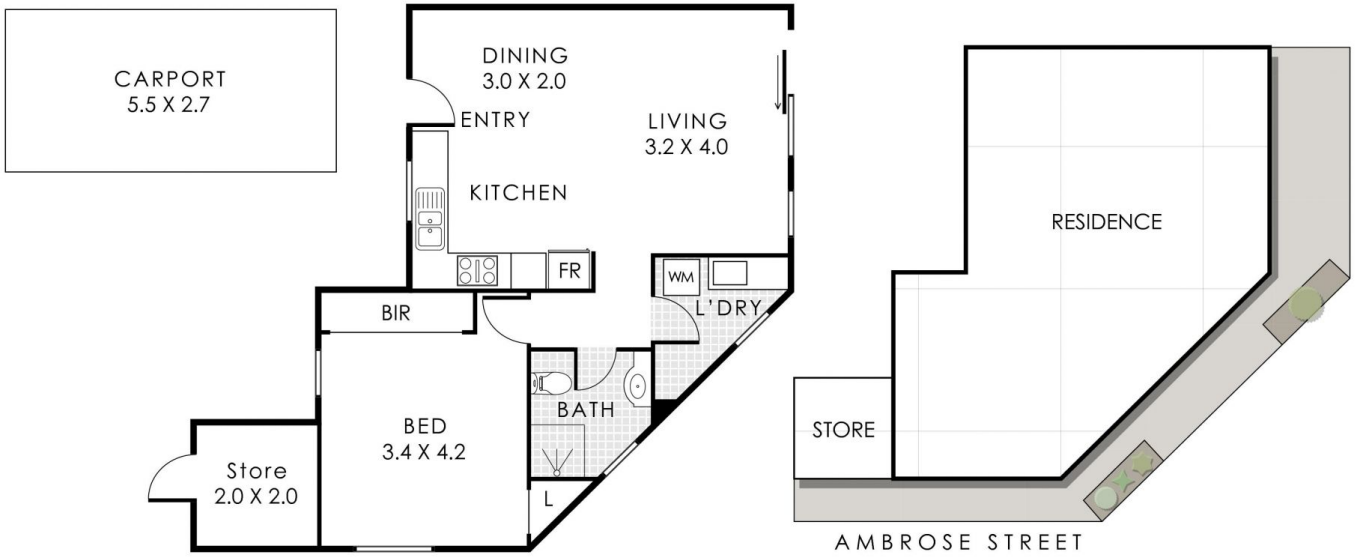
Type : Unit
Price : Offers from \$400,000
Building Size : 53 sqm
View : <https://www.abelproperty.com.au/8168008>



Ryan Abel
08 9208 1999



Marius Bonev
08 9208 1999



8/26 Ambrose Street, Innaloo

Residence 53m² | Carport 15m² | Store 4m²

Total Area 72m² | Total Lot Size 102m²



This floorplan is for illustration purposes only to show the layout of the property. Whilst every effort has been made to ensure the accuracy of this floor plan, all measurements, and any other information shown are an approximate representation only. Measurements and total areas do not include or account for wall thickness or roof area under eaves. C&P Creative will not be held liable or responsible for any error, omission, misrepresentation or use of any information shown on this floor plan. Not to be used for any other purpose. www.candpcreative.com.au