



Cottesloe

2  1 

Welcome to Chartwell Court, it's Cottesloe living offering maximum lifestyle.

A great first home or perfect as an investment property, this top floor East facing apartment has elevated views amongst Cottesloe's iconic Norfolk Pines.

Renovated and well maintained this superbly located two-bedroom apartment is surrounded by premium coastal lifestyle opportunities and amenities galore.

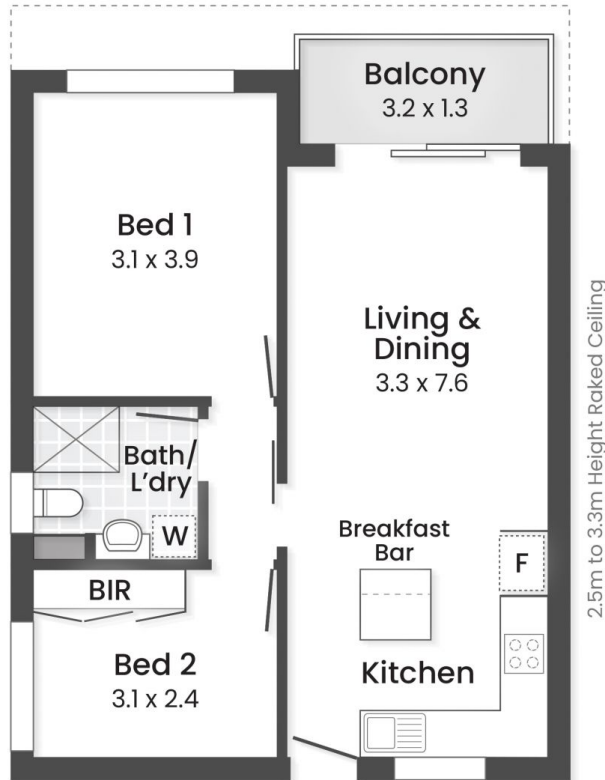
Nature awaits outside your front door with parks, walk and cycle paths, outdoor gyms, sporting clubs and surf clubs all on offer nearby.

[For full version visit the website](https://www.abelproperty.com.au)

Type : Unit
Price : Coming Soon
Building Size : 57 sqm
Land Size : 57 sqm
View : <https://www.abelproperty.com.au/8161643>



Kyle Peters
08 9208 1999



Strata Area	
Internal Area	57m ²
Other Areas	
Balcony	4m ²
Total	61m²

