



### 3 Franklin Street Swanbourne WA

2 1 1

Classic original weatherboard home ideally positioned on an elevated, corner site within the coveted Swanbourne Village precinct. Just a minute or so easy stroll to the train station, IGA, Upperhand Burgers, pizza lounge, fish & chips, artisan bakery, choice of cafes, wine bar, liquor store and Scotch College.

Picturesque playing fields, Lake Claremont walk & run trails, Allen Park, Cottesloe & Claremont Golf Courses, Claremont Quarter shopping, Swanbourne & Cottesloe beaches are also close by.

Calling all astute landbank investors, the keenest of renovators & extenders - or to create your new dream home in this 'walk everywhere' cosmopolitan location. Rent

**Type** : House  
**Price** : UNDER OFFER  
**Land Size** : 405 sqm  
**View** : <https://www.abelproperty.com.au/8140385>



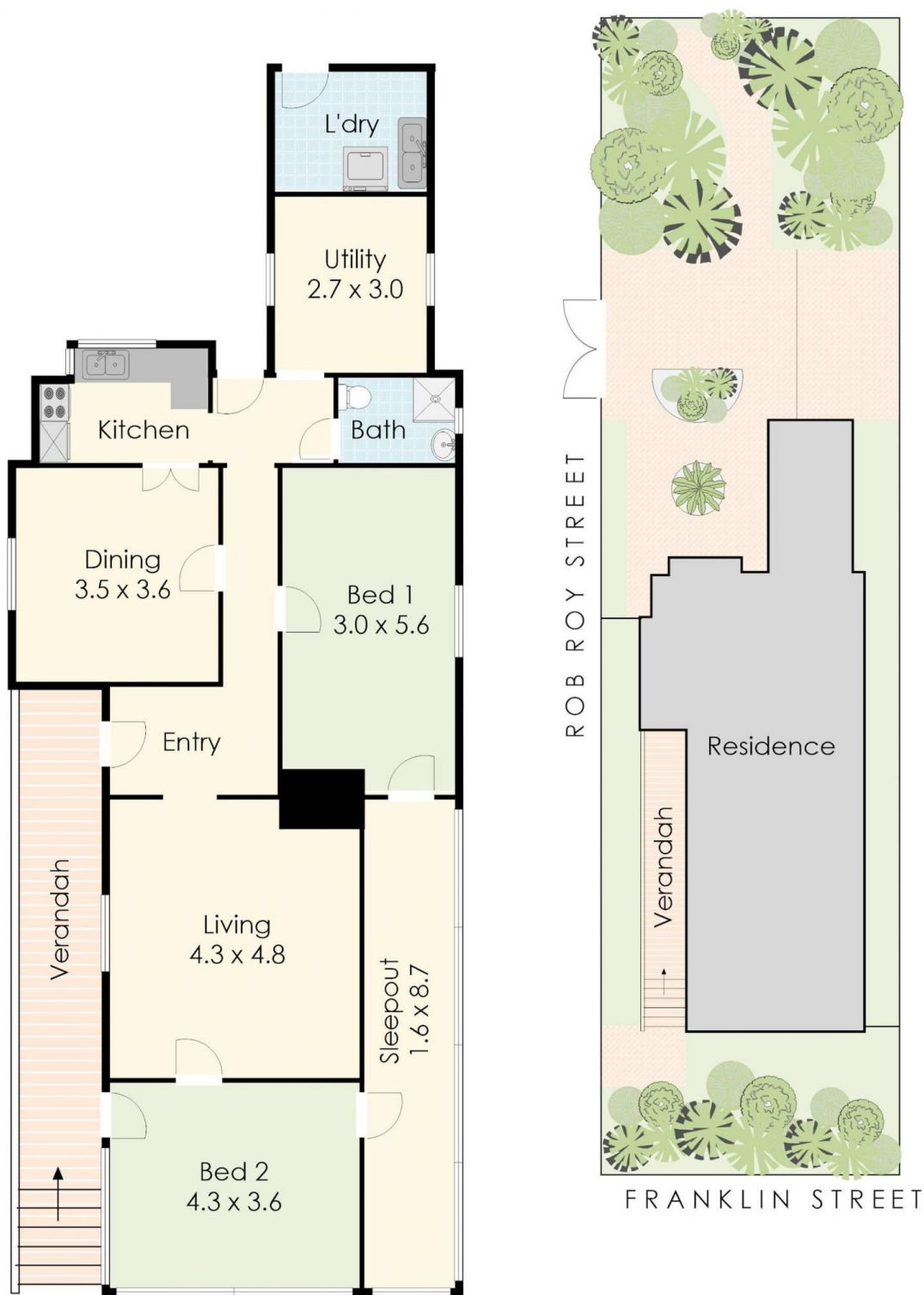
**Nathan McIntosh**  
(08) 9208 1999



**Jon Bahen**  
(08) 9208 1999

[For full version visit the website](https://www.abelproperty.com.au)





Internal: 118sqm  
Verandah: 14sqm

**Total Internal Areas: 132sqm**

### 3 Franklin Street, Swanbourne

Representation Only. Not to be used as working drawings. Dimensions are approximate.  
[www.primrosehillinteriors.com.au](http://www.primrosehillinteriors.com.au)