



2/51 Mount Street West Perth WA

3 2 2

Private inspections available Saturday 12 October between 10 AM to 12 PM please call Kyle Peters 0404 883 689 to arrange a viewing.

Welcome to your own chic sanctuary surrounded by endless lifestyle opportunities and located in a sought-after complex of only 10 apartments. You will be forgiven for thinking you are on permanent holiday.

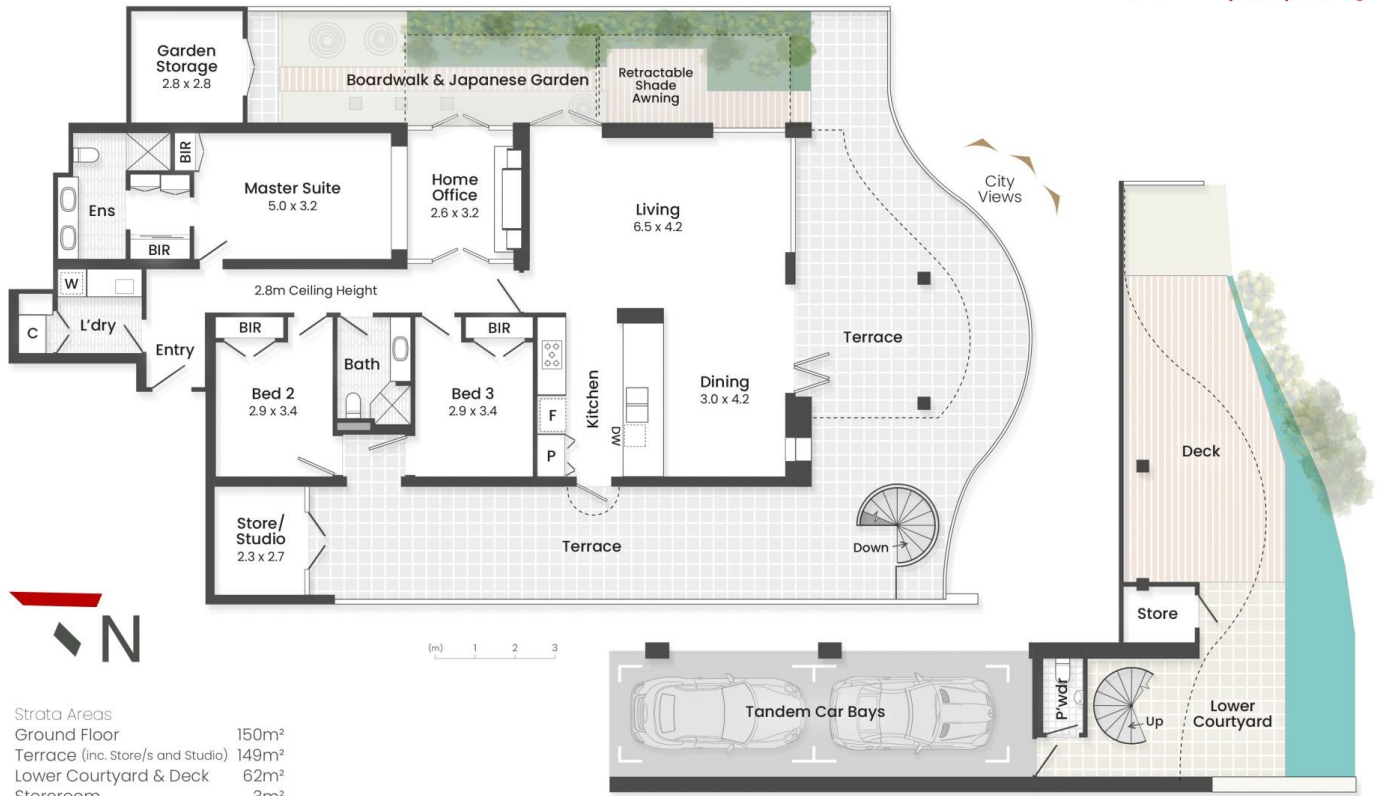
The home is a very short walk from the beautiful Kings Park, perfect for strolls, picnics or just taking in the extraordinary views, or alternatively you can wander down to the road to the glorious Swan River or catch a free Cat Bus into the vibrant CBD or nearby Northbridge.

[For full version visit the website](https://www.abelproperty.com.au)

Type : Apartment
Price : Early - Mid \$2 Millions
Building Size : 388 sqm
View : <https://www.abelproperty.com.au/8139120>



Kyle Peters
08 9208 1999



Strata Areas	
Ground Floor	150m ²
Terrace (inc. Store/s and Studio)	149m ²
Lower Courtyard & Deck	62m ²
Storeroom	3m ²
Car Bays	24m ²
Total	388m²

Dimensions and Areas are approximate. Drawn for presentation purposes only.

info@openpad.com.au @openpad