

111/3 Homelea Court Rivervale WA

3 2 2

Discover your dream home in the heart of Rivervale with this stunning 3-bedroom, 2-bathroom apartment at 111/3 Homelea Court. Located in the sought-after Springs precinct, this residence offers a perfect blend of modern design, comfort, and convenience.

Key Features:

? **Spacious Living:** The apartment features a big open plan living and dining area that seamlessly connects to a private balcony, providing the perfect space for entertaining or relaxing. Large windows flood the area with natural light, creating a bright and welcoming atmosphere.

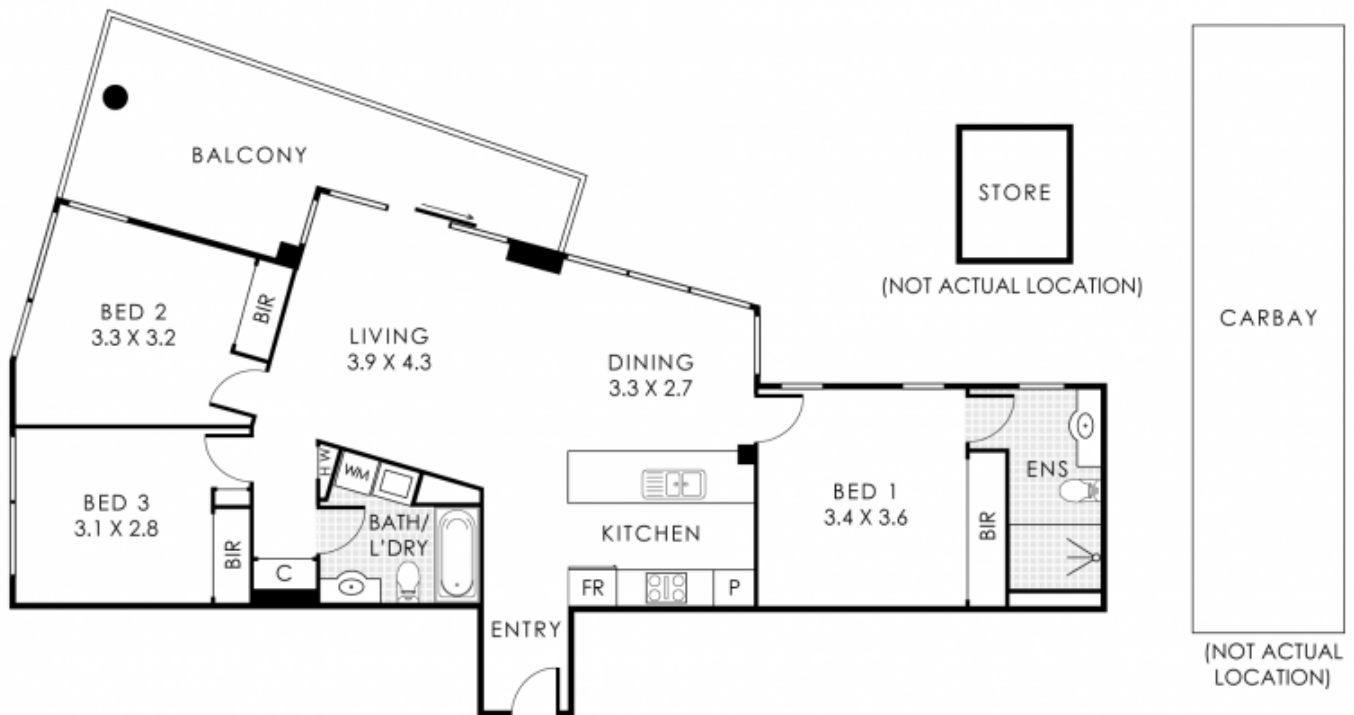
? **Modern Kitchen:** The well-appointed kitchen includes an island bench, sleek stainless-steel appliances, and ample

Type	: Apartment
Price	: Contact Agent
Building Size	: 147 sqm
View	: https://www.abelproperty.com.au/8127900



Marius Bonev
08 9208 1999

[For full version visit the website](https://www.abelproperty.com.au)



111/3 Homelea Court, Rivervale

Residence 101m² | Store 4m² | Carbay 25m² | Balcony 18m²

Total Area 148m²



This floor plan is for illustrative purposes only to show the layout of the property. While every effort has been made to ensure the accuracy of this floor plan, all measurements, and any other information shown are an approximate representation only. Measurements and bed sizes do not include or account for wall thickness or roof space under eaves. Call Copley will not be held liable or responsible for any error, omission, misrepresentation or use of any information shown on this floor plan. Not to be used for any other purpose. www.copleysolutions.com.au