



## 8 Ellery Gate Aveley WA

4 2 4

Bring the caravan, boat, trailer or more cars as this property will house them all.

Conveniently located off the main road, yet easy access to it to access shops, parks, schools, Tonkin Hwy, airport and with the new Metro train Station opening in 2024, a short trip to anywhere, yet come home to this pristine property that offers so much and more...

### AT A GLANCE

4 big bedrooms, 2 bathroom, Theatre, Family, Dining, Kitchen + Butlers Pantry, Huge outdoor entertaining for all year round, Triple Garage + side access for the toys

### FEATURES INCLUDE

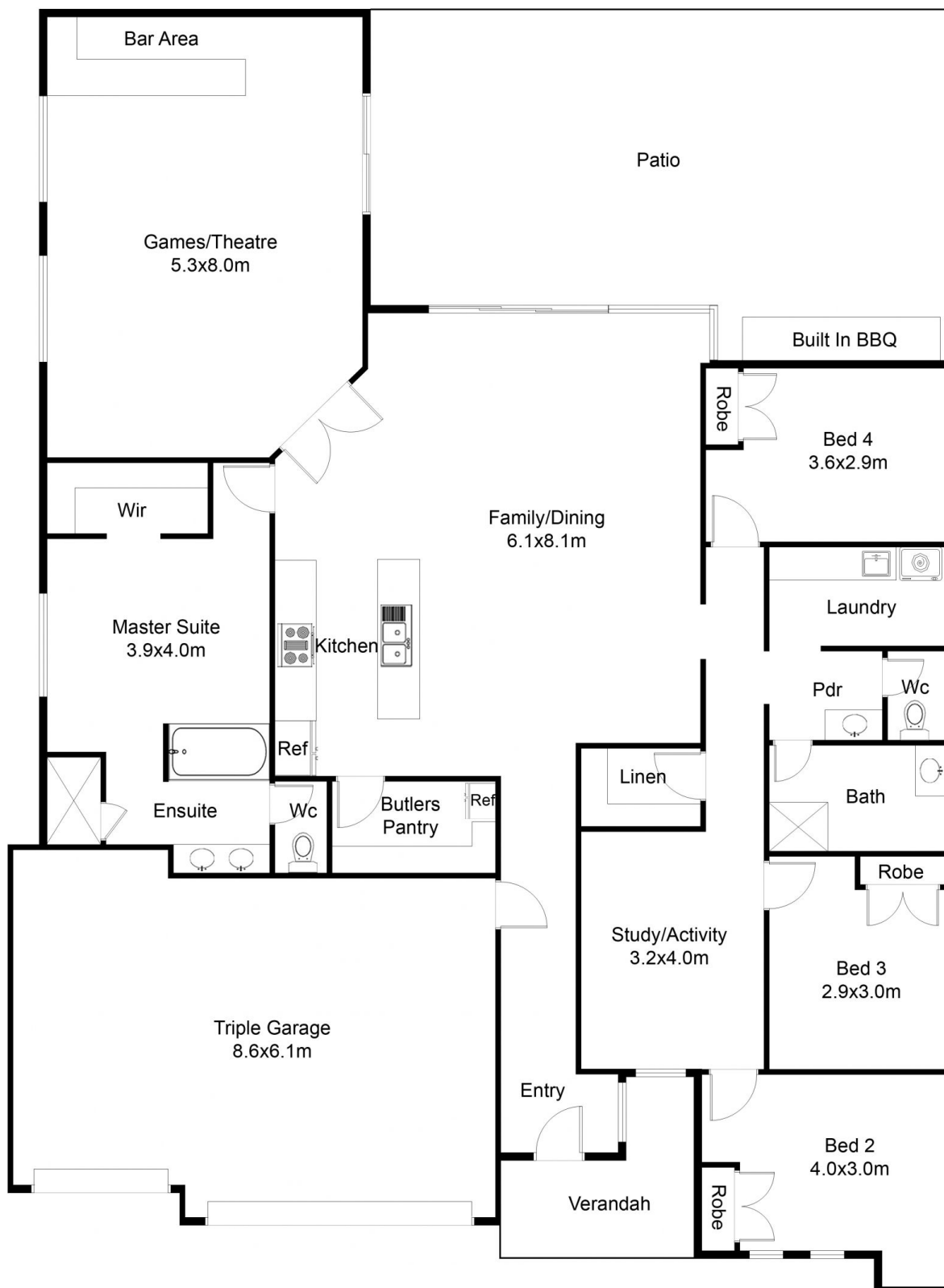
- Master bedroom with large walk in robe

[For full version visit the website](https://www.abelproperty.com.au/8107175)

<b>Type</b>	: House
<b>Price</b>	: UNDER OFFER!
<b>Building Size</b>	: 368.27 sqm
<b>Land Size</b>	: 612 sqm
<b>View</b>	: <a href="https://www.abelproperty.com.au/8107175">https://www.abelproperty.com.au/8107175</a>



**Carolyn May**  
0438 073 488



## FLOOR PLAN

This floor plan including furniture, fixture measurements and dimensions are approximate and for illustrative purposes only. BoxBrownie.com gives no guarantee, warranty or representation as to the accuracy and layout. All enquiries must be directed to the agent, vendor or party representing this floor plan.

House Living	236.72m <sup>2</sup>
Garage	53.16m <sup>2</sup>
Patio	69.30m <sup>2</sup>
Verandah	9.09m <sup>2</sup>
<b>Total House</b>	<b>368.27m<sup>2</sup></b>

**8 Ellery Gate Aveley**