



## 1/43 Hooley Road Midland WA

2  1  1 

This amazing 2-bedroom, 1-bathroom ground floor apartment combines modern living with unbeatable convenience. From the moment you step inside, you'll be impressed by the spacious and inviting open-plan living and dining area, perfect for entertaining guests or unwinding after a busy day.

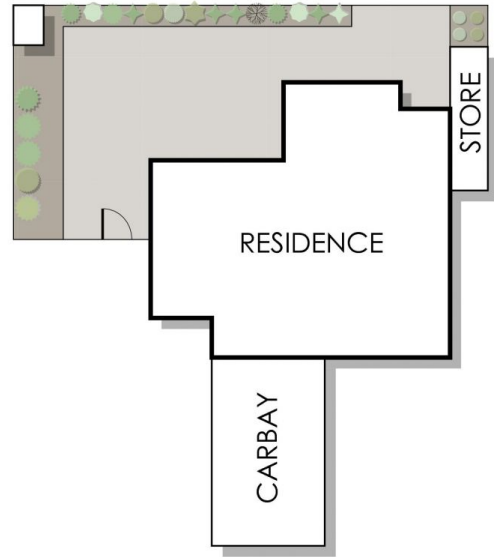
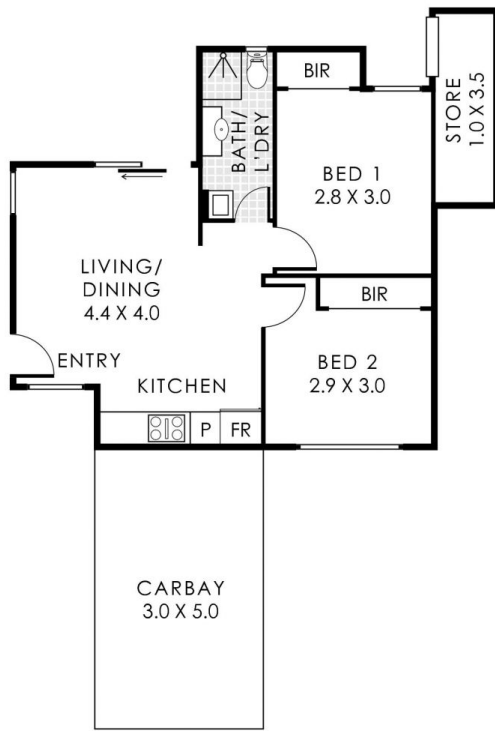
The modern kitchen features quality appliances, ample bench space, and contemporary cabinetry that provides plenty of storage. Both bedrooms are generously sized with built-in wardrobes, ensuring you have all the space you need for your belongings. The well-appointed bathroom complements the stylish feel of the apartment, offering a sanctuary for relaxation.

**Type** : Apartment  
**Price** : UNDER OFFER!  
**View** : <https://www.abelproperty.com.au/8096818>



**Brett van Son**  
08 9208 1999

[For full version visit the website](https://www.abelproperty.com.au)



**1/43 Hooley Road, Midland**

Residence 49m<sup>2</sup> | Carbay 15m<sup>2</sup> | Store 4m<sup>2</sup>

**Total Area 68m<sup>2</sup> | Total Lot Size 108m<sup>2</sup>**



This floorplan is for illustration purposes only to show the layout of the property. Whilst every effort has been made to ensure the accuracy of this floor plan, all measurements, and any other information shown are an approximate representation only. Measurements and total areas do not include or account for wall thickness or roof area under eaves. CIBC Creative will not be held liable or responsible for any error, omission, misrepresentation or use of any information shown on the final floor plan. Not to be used for any other purpose.  
www.cibccreative.com.au