



503/5 Wunderlich Road Subiaco WA

3 2 3

Newly Released! North-Facing Penthouse with over 230m² living space including 100m² of open air balcony.

3 large bedrooms, 2 bathrooms and 3 car bays!

Designed to make an impression, you will love the feeling of the 3 metre high ceilings, allowing ample light in from the floor-to-ceiling windows and sliding doors - naturally all fully Double Glazed.

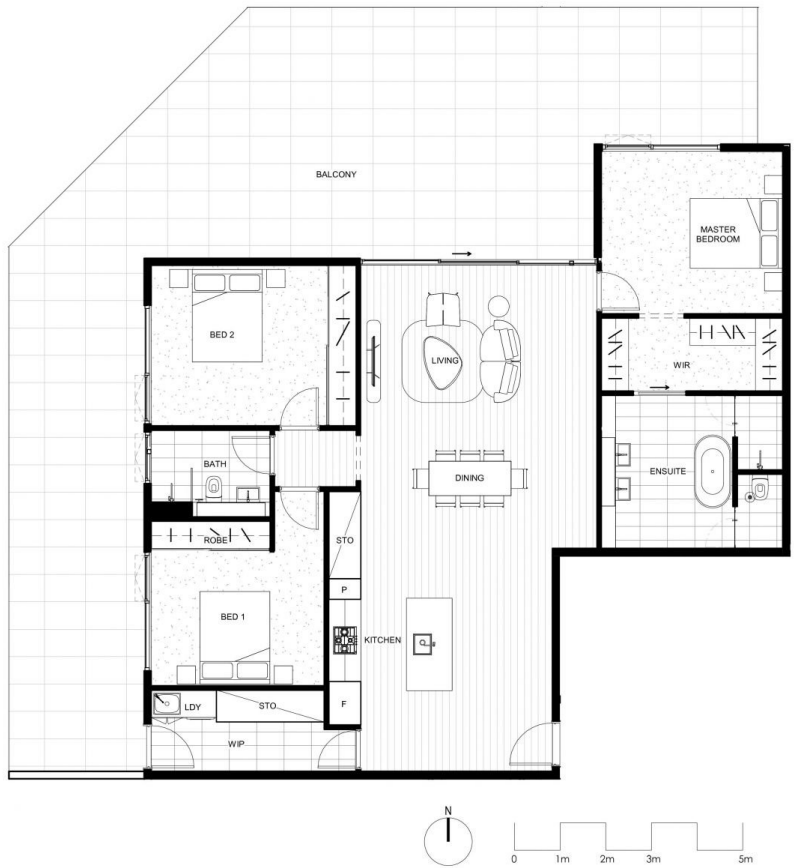
Entertain family and friends on your massive 103m² wraparound balcony. Enjoy uninterrupted northern views and beautiful winter sun during the day and toast the sun setting over the horizon from the western side of your balcony.

The Penthouse also includes:

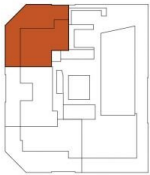
Price : UNDER OFFER!
Building Size : 135 sqm
View : <https://www.abelproperty.com.au/8083072>



Ryan Abel
08 9208 1999



LOCATION PLAN



Disclaimer: This plan is for marketing purposes only, is not to scale, will not form part of any contract for the sale of the property and does not define what is being sold and purchased under any such contract. The plan was produced prior to construction, and any dimensions, areas fittings, finishes and specifications referred to in the plan are subject to change without notice. The sale of the property will exclude any furniture, furnishings, plants and vegetation, chandeliers and non-fixed items depicted in the plan, and the positioning of any such items in the plan cannot be relied upon as an indication of the final positioning of any power points, TV connections points and the like. For details of the inclusions in the sale, prospective buyers must refer to the Schedule of Finishes and any other provisions expressly stated in the contract for sale. All graphics, including but not limited to tile layout, balustrades, and bedroom opaque window location are indicative only. Bulkheads for services are not depicted.



ORCHARD
TERRACE

503



APT.	INTERNAL	BALCONY	TOTAL
503	135m ²	103m ²	238m ²

blaq
PROPERTY