



17 Calthorpe Street Aveley WA

4 2 2

You will be in awe with the attention to detail and no expense spared in this property. A definite head turner that will keep on wowing you.

AT A GLANCE

4 bedrooms, 2 bathrooms, double garage with high clearance, separate theatre room, open plan family, dining, kitchen and scullery/laundry, alfresco entertaining.

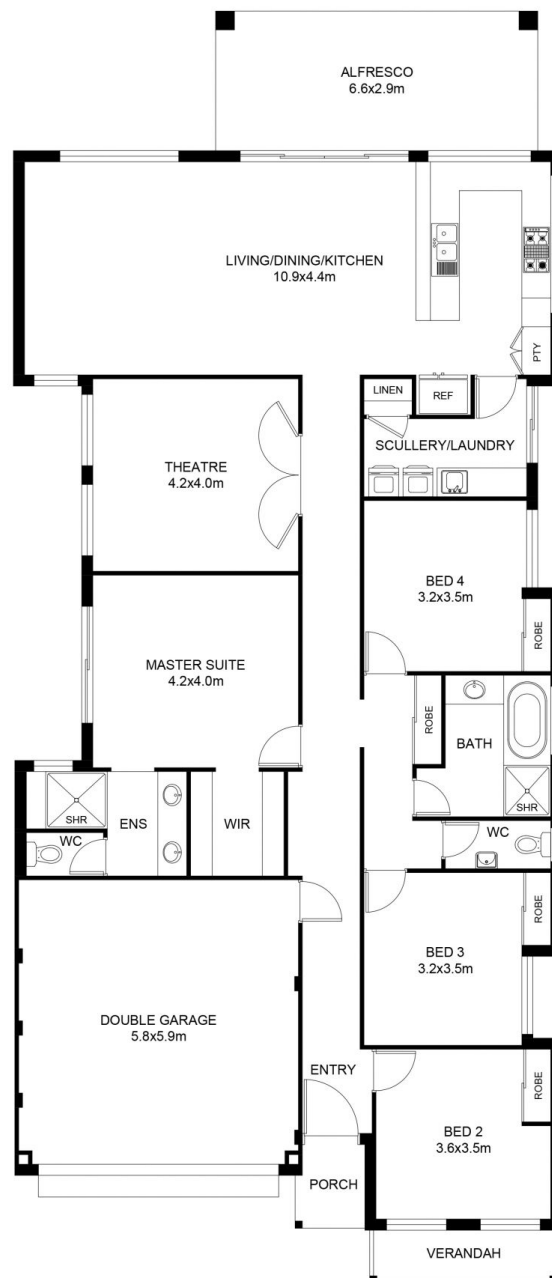
FEATURES YOU ARE GOING TO LOVE

- Extra high 24 course 1200 mm wide entrance front door
- Wide entrance hallway with soaring 31 course high ceilings
- Amazing feature wood look tiling throughout the main living area, they are a stunner
- King size Master suite offers spacious walk in robe and sliding door that opens up to courtyard

Price : \$ 810,000
Building Size : 258.79 sqm
Land Size : 375 sqm
View : <https://www.abelproperty.com.au/8081324>



Carolyn May
08 9208 1999



FLOOR PLAN

This floor plan including furniture, fixture measurements and dimensions are approximate and for illustrative purposes only. BoxBrownie.com gives no guarantee, warranty or representation as to the accuracy and layout. All enquiries must be directed to the agent, vendor or party representing this floor plan.

House Living	196.677m ²
Alfresco	19.401m ²
Garage	36.044m ²
Porch	2.392m ²
Verandah	4.279m ²
Total House	258.793m ²

17 Calthorpe Street Aveley