



34 Beatrice Street Doubleview WA

3 1 2

Step into a beautifully renovated 1948 solid double brick home at 34 Beatrice Street, Doubleview. This charming 3-bedroom, 1-bathroom property seamlessly blends classic character with contemporary elegance, making it a perfect haven for modern living.

Land Size : 378 sqm

View : <https://www.abelproperty.com.au/8052422>

Key Features:

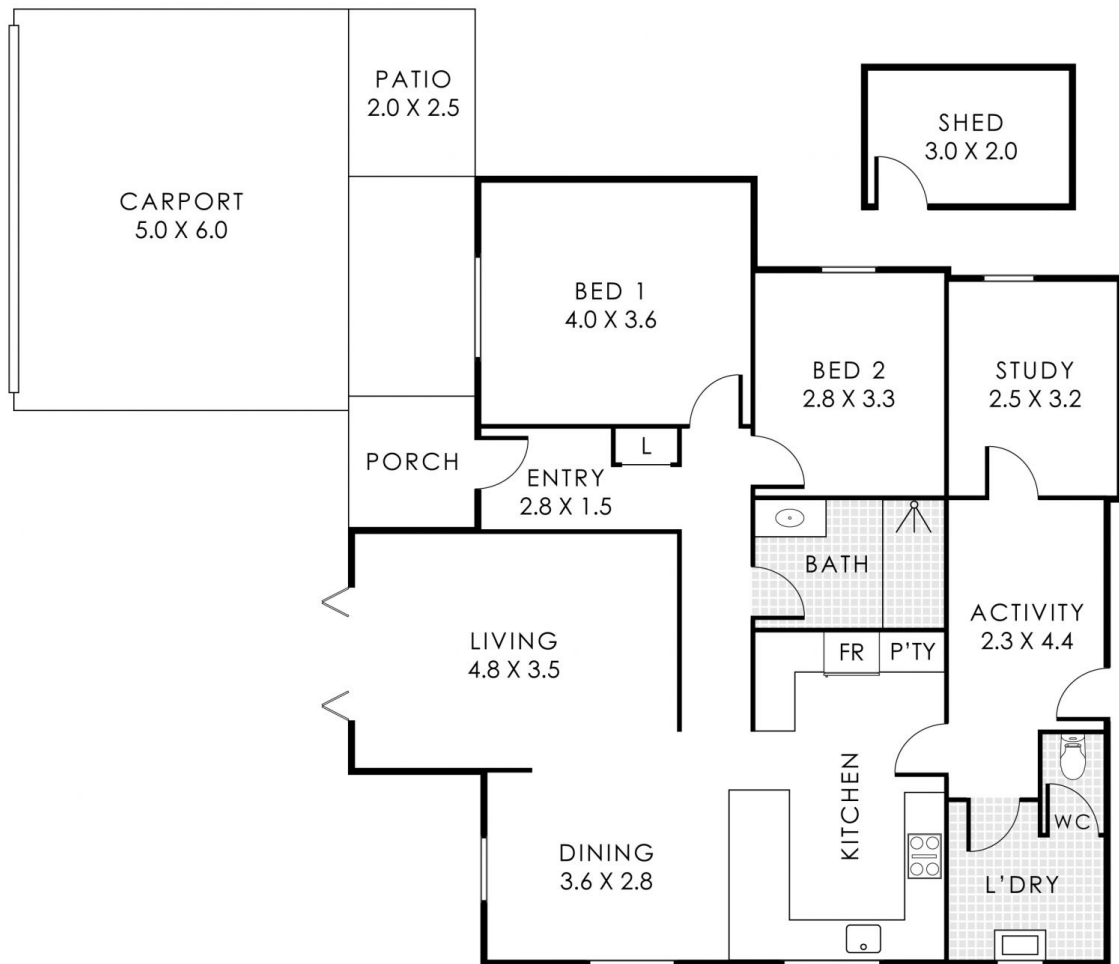
Timeless Floors: Solid timber floors add warmth and a touch of sophistication throughout the home.

Modern Open Plan: The open plan kitchen, meals, and family room create a welcoming space for gatherings. The high-end kitchen features matte black cabinetry, a 6-burner gas cooktop, an extra-large oven, and a built-in bar with raw timber shelving, catering to culinary enthusiasts.

Indoor-Outdoor Living: Large bi-fold timber doors open from the living area onto a timber decking and private, lush



Jenna Abel
08 9208 1999



34 Beatrice Street, Doubleview

Residence 109m² | Porch 4m² | Patio 5m² | Carport 30m² | Shed 6m²

Total Area 154m²



This floorplan is for illustration purposes only to show the layout of the property. Whilst every effort has been made to ensure the accuracy of this floor plan, all measurements, and any other information shown are an approximate interpretation only. Measurements and total areas do not include or account for wall thickness or roof area under eaves. Crib Creative will not be held liable or responsible for any error, omission, misrepresentation or use of any information shown on the final floor plan. Not to be used for any other purpose. www.cribcreative.com.au