

## 49 Stadium Drive Floreat WA

4 3 2

Welcome to 49 Stadium Drive, a stunning 4-bedroom, 3-bathroom home nestled in the heart of Perry Lake's sought-after new estate. This exquisite residence offers an unparalleled lifestyle, combining low-maintenance living with proximity to parks, beaches, and vibrant cafes.

### Key Features:

**Contemporary Design:** Immaculately finished from top to bottom, this home exudes modern elegance. Soaring double-height ceilings and high windows flood every room with natural light, enhancing the sense of space. Gleaming marble floors throughout add a touch of sophistication.

**Spacious Living Areas:** Bright and airy living spaces open

**Type** : House  
**Land Size** : 326 sqm  
**View** : <https://www.abelproperty.com.au/8033294>

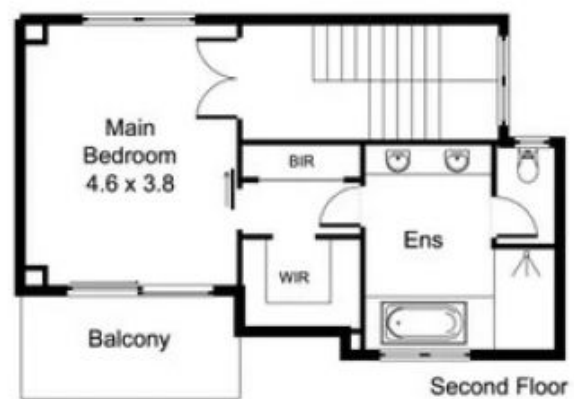


**Jenna Abel**  
08 9208 1999



**Adrian Abel**  
08 9208 1999

[For full version visit the website](https://www.abelproperty.com.au)



## 49 Stadium Drive Floreat

All measurements are estimates.  
Plans are for demonstration only.  
[www.cribcreative.com.au](http://www.cribcreative.com.au)

Approximate Areas -	
Ground Floor:	156.42m <sup>2</sup>
Garage:	40.95m <sup>2</sup>
Alfresco:	12.63m <sup>2</sup>
Porch:	2.18m <sup>2</sup>
First Floor:	114.90m <sup>2</sup>
Second Floor:	52.37m <sup>2</sup>
Balcony:	7.67m <sup>2</sup>
<b>Total Area:</b>	<b>389.12m<sup>2</sup></b>