

13/1 Brigid Road Subiaco WA

1  1  1 

There is no doubt this stunning ground level apartment represents central, single level, low maintenance living at its best! Situated right in the thriving heart of Subiaco, the lifestyle opportunities at your doorstep are simply endless.

A generous open kitchen flows seamlessly to a spacious open plan living and dining area with split system air conditioning and westerly aspect. A generous master bedroom is equipped with a built - in robe and there is a substantial semi ensuite and separate European style laundry.

An east facing courtyard has a lovely private leafy aspect to beautifully manicured common grounds, the perfect spot to soak up the sun or relax with a glass of wine. There is

[For full version visit the website](https://www.abelproperty.com.au/8005877)

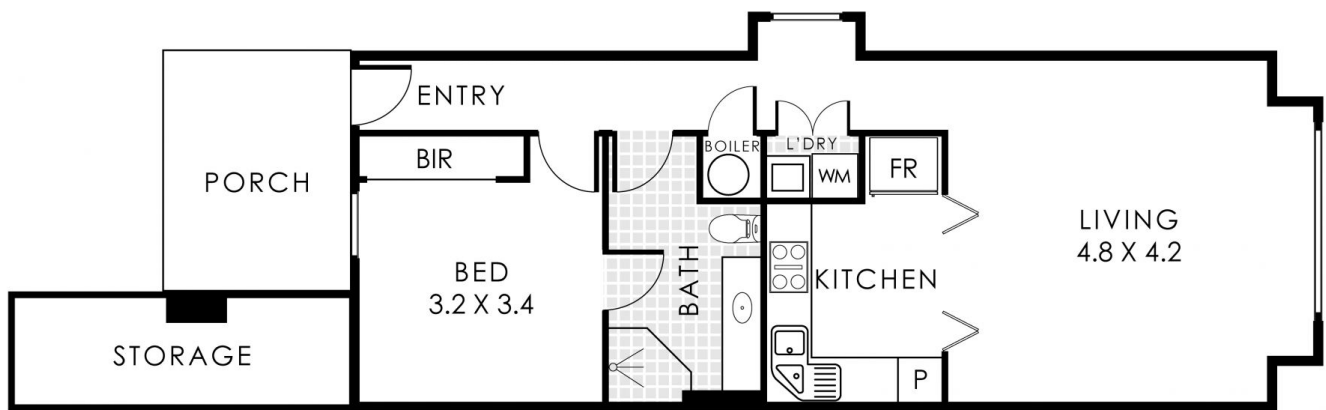
Type : Apartment
Building Size : 57 sqm
Land Size : 90 sqm
View : <https://www.abelproperty.com.au/8005877>



Ryan Abel
08 9208 1999



Cam McGregor
08 9208 1999



CARBAY
5.5 X 2.7
(NOT ACTUAL LOCATION)

13/1 Brigid Road, Subiaco

Internal 57m² | External 33m² | Total Area 90m² | Total Lot Size 90m² |



This floorplan is for illustration purposes only to show the layout of the property. Whilst every effort has been made to ensure the accuracy of the floor plan, all measurements, and any other information shown are an approximate representation only. Measurements and total area do not include or account for wall thickness or roof area under eaves. C&S Creative will not be held liable or responsible for any error, omission, misrepresentation or use of any information shown on the first floor plan. Not to be used for any other purpose. www.c&screative.com.au