




Beaconsfield

4  2  4 

Welcome to the place where quality modern building full of contemporary design and layout, rare opportunity, superb suburban location, and an abundance of local lifestyle opportunities all come together.

It's contemporary styling and design delivered in a super convenient location within easy walking distance to buses, local shopping centre (including the incredible The Chef and the Grocer), restaurants, bars, parks, and schools.

Your local beaches are South Beach and South Freo Dog beach and are only 3 kilometres away!

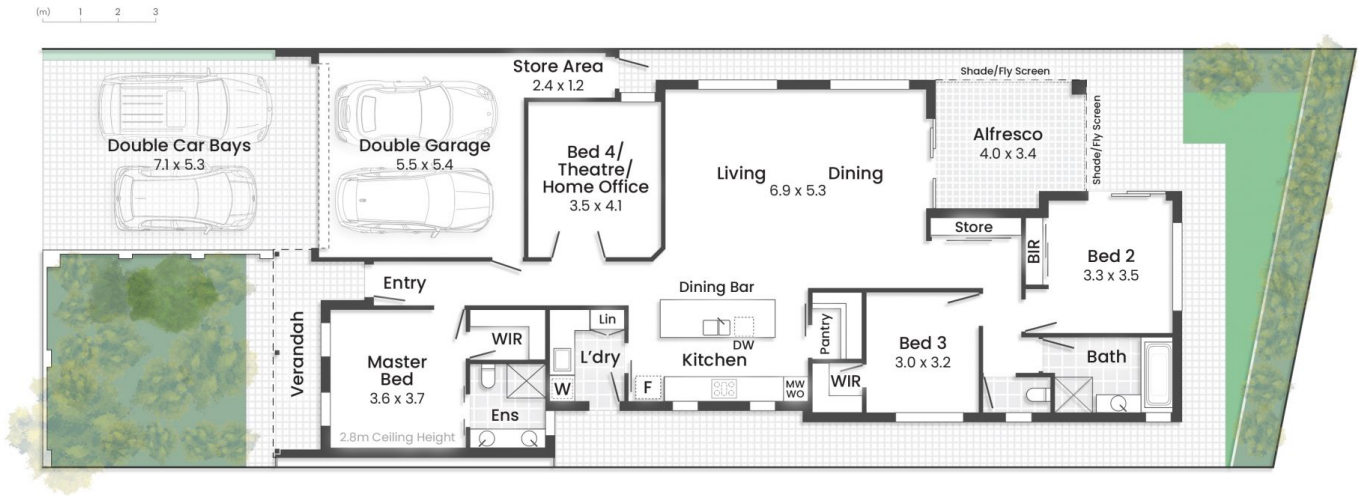
The home comprises of three to four bedrooms, two bathrooms, an abundant light filled open plan living, dining

[For full version visit the website](https://www.abelproperty.com.au/8005865)

Type : House
Building Size : 202 sqm
Land Size : 386 sqm
View : <https://www.abelproperty.com.au/8005865>



Kyle Peters
 08 9208 1999



Approximate Areas:

Internal Area	148m ²
Verandah	8m ²
Garage & Store	33m ²
Alfresco	13m ²
Total	202m²

Dimensions and Areas are approximate. Drawn for presentation puposes only.

info@openpad.com.au @ openpad