



Crawley

2 1 1

Welcome to Crawley, you're only minutes' walk to the beautiful Swan River foreshore with its lush playing fields, jetties, restaurant, and nearby yacht club, or to the University of Western Australia.

You can relax and take advantage from the generous choice of cafés, restaurants, and bars close by.

The home is in a small complex of only 7 apartments and offers the convenience of a superb downtown location with easy living and lifestyle opportunities galore.

Public transportation is also nearby, making getting into the City CBD or going to Cottesloe beach a breeze.

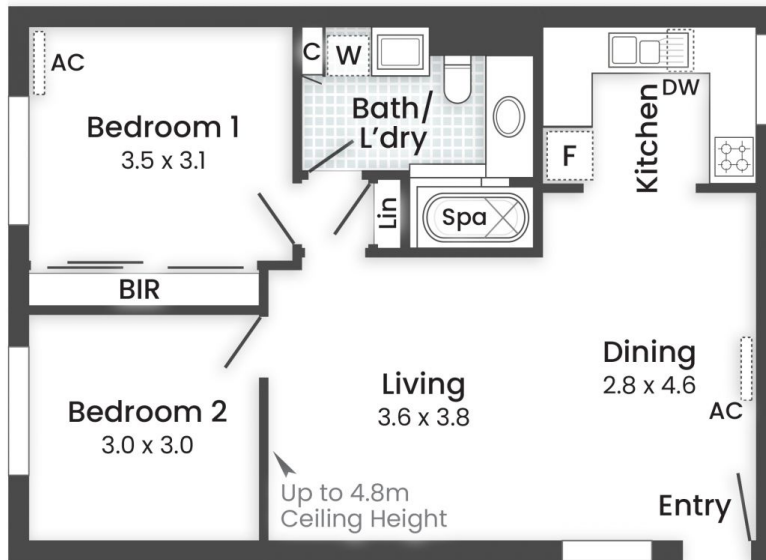
Type : Apartment
Building Size : 69 sqm
View : <https://www.abelproperty.com.au/8005864>



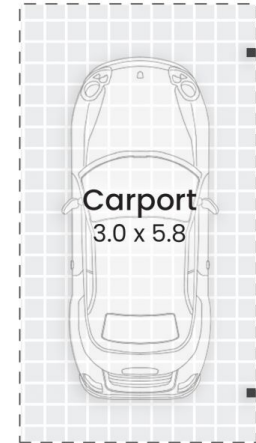
Kyle Peters
 08 9208 1999

[For full version visit the website](https://www.abelproperty.com.au)

(m) 1 2 3



FIRST FLOOR



GROUND FLOOR