



16 Dumfries Road Floreat WA

3  1  2 

For the first time on the market, 16 Dumfries Road, Floreat unveils a rare gem - an original 3-bedroom, 1-bathroom home on 890sqm of prime land with a remarkable 27m frontage. Built in 1965, this solid residence presents a unique opportunity for the discerning buyer.

Step inside and explore the untapped potential within the versatile floorplan. Envision the possibilities as you tailor the space to your preferences and lifestyle. This home is more than a property; it's a piece of Floreat's history.

Embrace the sought-after lifestyle with proximity to The Herdsman Grocer, Herdsman Lake, and Bold Park. Indulge in the vibrant cafe culture, take a leisurely stroll through natural havens, and enjoy the richness of nearby amenities. In addition, the proximity to Churchlands Senior High School and Floreat Park Primary School is less than a

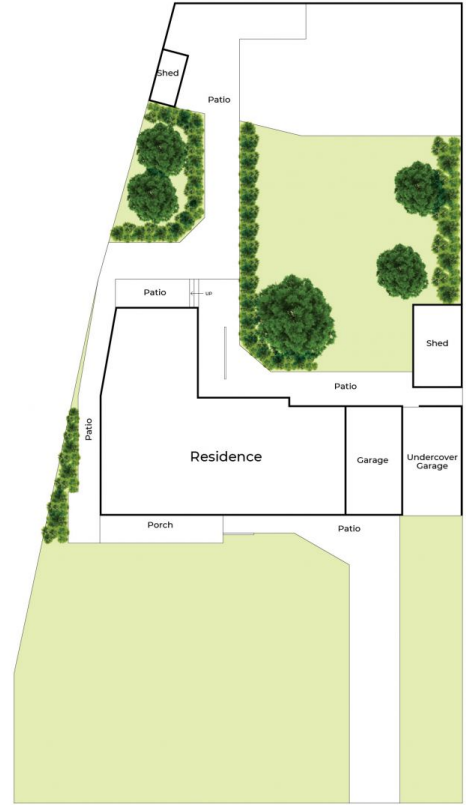
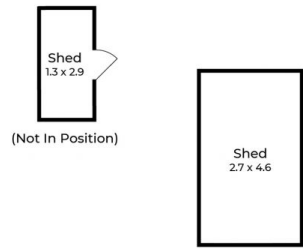
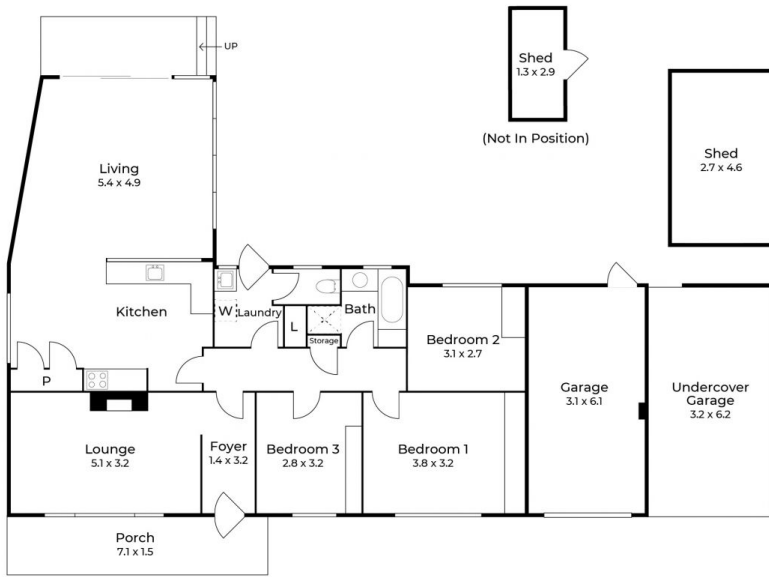
Land Size : 890 sqm
View : <https://www.abelproperty.com.au/8005843>



Jenna Abel
08 9208 1999



Adrian Abel
08 9208 1999



16 DUMFRIES ROAD, FLOREAT

Residence 115m²| Garage 19m²| Undercover Garage 20m²| Shed 16m²| Porch 11m²
 Total Area 890m²



Drawn for marketing purposes only. All measurements are approximate and not to scale. They are subject to errors and inaccuracies and no liability will be accepted. Interested parties should independently verify and obtain their own legal advice.