



### 323 Crawford Road Inglewood WA

3 1 2

Nestled in a prize corner location in idyllic Inglewood, this charming character home is the one you've been waiting for.

With its original features, stained glass windows, high ceilings, jarrah floorboards and feature fireplace, you'll fall in love at first sight with this character beauty. It boasts three beautiful bedrooms and one modern bathroom, with a gorgeous, cosy, sun-filled living room - as well as a front verandah to spend long summer evenings on.

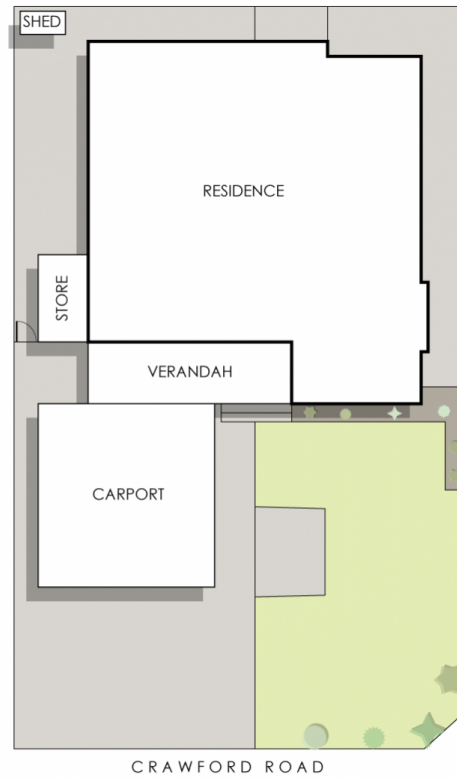
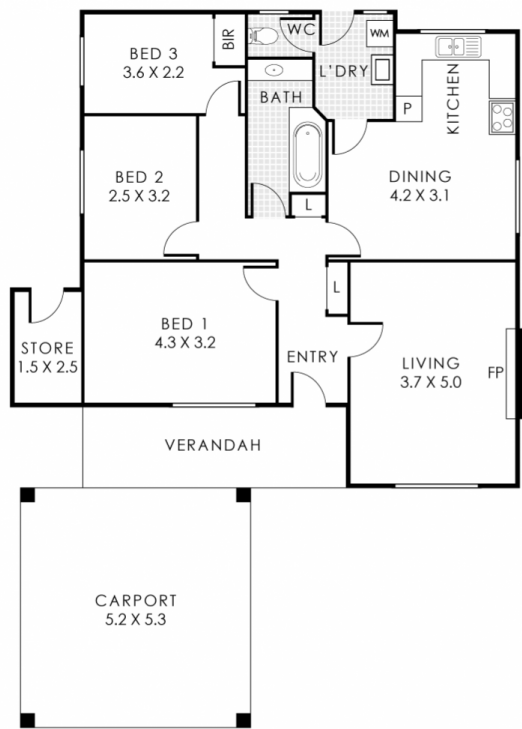
This lovely home sits on a 312sqm corner block in a prime location, just moments away from Beaufort St with its many cafés, restaurants, bars and boutiques. Mount Lawley Golf Course and Macaulay Park are both within walking

**Type** : House  
**Land Size** : 312 sqm  
**View** : <https://www.abelproperty.com.au/8005838>



**Jason Ryan**  
**08 9208 1999**

[For full version visit the website](https://www.abelproperty.com.au)



### 323 Crawford Road, Inglewood

Residence 92m<sup>2</sup> | Carport 28m<sup>2</sup> | Verandah 10m<sup>2</sup> | Store 4m<sup>2</sup>

Total Area 134m<sup>2</sup>



abelproperty

This floorplan is for illustration purposes only to show the layout of the property. Whilst every effort has been made to ensure the accuracy of this floor plan, all measurements, and any other information shown are an approximate interpretation only. Measurements and total areas do not include or account for wall thickness or roof area under eaves. Crib Creative will not be held liable or responsible for any error, omission, misrepresentation or use of any information shown on the final floor plan. Not to be used for any other purpose. [www.cribcreative.com.au](http://www.cribcreative.com.au)