



19 Lyndale Street Gwelup WA

4 🏠 2 🚗 2 🚗

Spend the New year enjoying the pool and sunshine, entertaining friends and family in your new Impressive residence with an abundance of room for all!

Land Size : 818 sqm

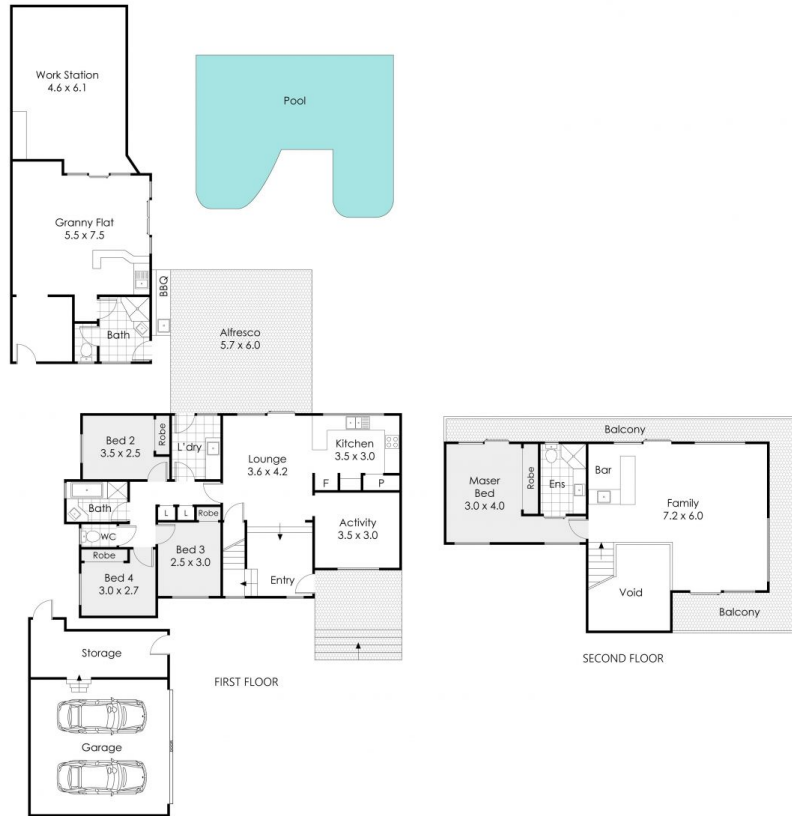
View : <https://www.abelproperty.com.au/8005799>

This location is hard to beat - quiet Cul-de-sac, less than 10 minutes to the beach, walking distance to Gwelup shopping centre, Brand New Karrinyup shopping centre just a few minutes away, quality local schools close by, bordering parklands with on-street playground and easy access to Lake Gwelup Nature Reserve.

Your sanctuary awaits set back from the road with a massive driveway and offers multiple living areas, self-contained granny flat, all seasons outdoor entertaining, sparkling below ground pool together with an alfresco complete with Café blinds - it's hard not to feel relaxed and welcomed in this pleasing property!



Dominic Ferraro
08 9208 1999



19 Lyndale Street, Gwelup

This floor plan is not to scale.
 Dimensions are approximate and therefore should only be used for illustrative purposes.

	341 m ²
	4 Bed
	3 Bath
	2 Car