



2/30 Coode Street Mount Lawley WA

2 1 1

Nestled within the serene backstreets of Mount Lawley, discover the epitome of modern urban living at 2/30 Coode Street. This meticulously presented two-storey townhouse exudes charm and sophistication, offering an exceptional blend of style, comfort, and convenience.

As you step inside, you are greeted by a naturally illuminated interior, where every detail has been carefully curated to create a welcoming ambiance. The renovated ground floor boasts a seamless flow between living spaces, featuring a separate lounge, well-appointed kitchen with a generous meals area, and a convenient laundry with an additional toilet.

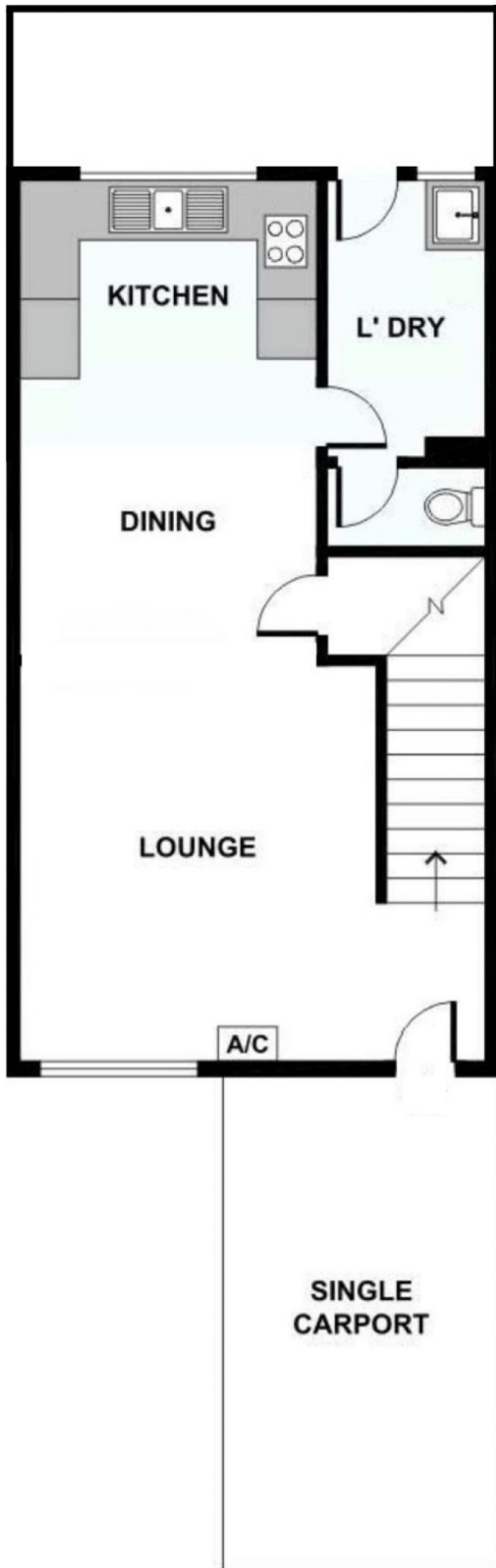
Venture outdoors to discover your own private oasis - a

[For full version visit the website](https://www.abelproperty.com.au/8005796)

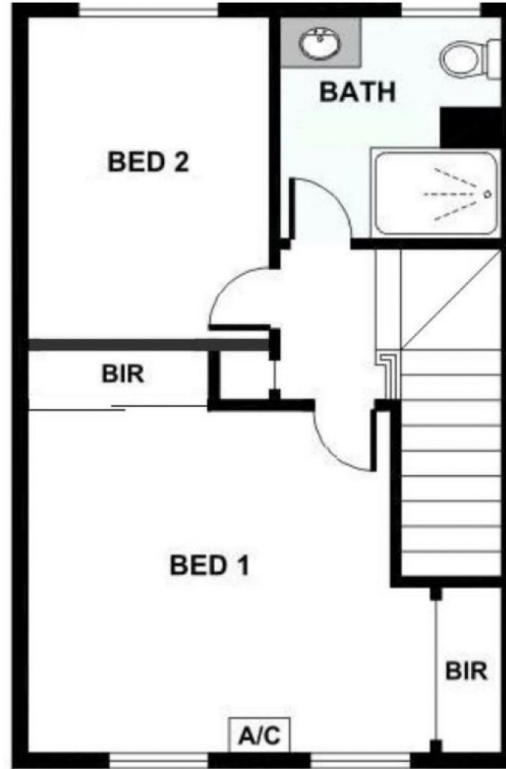
Type : Townhouse
Building Size : 80 sqm
Land Size : 80 sqm
View : <https://www.abelproperty.com.au/8005796>



Deirdre McTiernan
08 9208 1999



GROUND FLOOR



FIRST FLOOR



This floor plan is for illustration purposes only and to be used as a guide