



7 Satine Turn Aveley WA

4  2  2 

Renovated to perfection, this immaculate and flawlessly presented property offers you everything in 232m² living on 640m² block. Ideally suited for a large family offering all the rooms you could want plus an amazing outdoor entertainers delight with sparkling pool, huge patio and bar, gazebo and so much more and ready to move into!

Type : House
Building Size : 324.23 sqm
Land Size : 640 sqm
View : <https://www.abelproperty.com.au/8005786>

AT A GLANCE

4 bedroom, 2 bathroom, Theatre, Study, Family, Meals, Kitchen, Games, Activity, Outdoor entertaining, Pool, bar, 2 car Garage

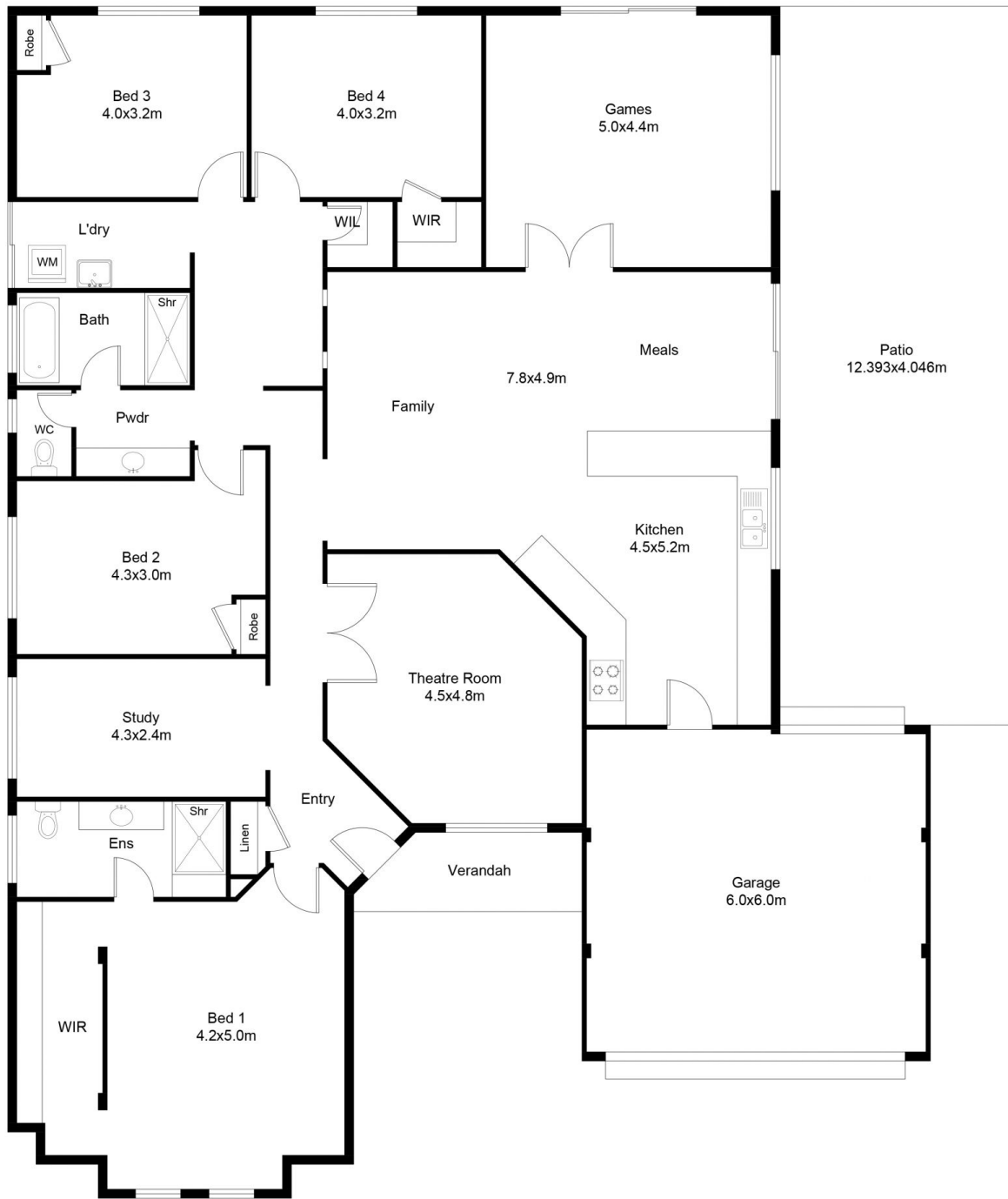
FEATURES THAT WILL WOW YOU

- King size master bedroom with double walk in robe
- Renovated en suite bathroom, floor to ceiling tiling, large

[For full version visit the website](https://www.abelproperty.com.au)



Carolyn May
08 9208 1999



FLOOR PLAN

This floor plan including furniture, fixture measurements and dimensions are approximate and for illustrative purposes only. BoxBrownie.com gives no guarantee, warranty or representation as to the accuracy and layout. All enquiries must be directed to the agent, vendor or party representing this floor plan.

House Living : 232.62m²
 Garage : 36.59m²
 Patio : 50.142m²
 Verandah : 4.88m²
 Total House : 324.23m²

7 Satine Turn Aveley