



## 15 Riverland Drive Ellenbrook WA

3  2  2 

Looking to relax, unwind and enjoy life. There's nothing to do here but enjoy the lifestyle. With never to be built out views over the Grassdale Wetlands and a spacious outdoor entertaining area all perched high on a corner block, ideal for the first home buyer, one to add to the investment portfolio, great down sizer or fantastic lock and leave, this property will tick the boxes.

### AT A GLANCE

3 bed, 2 bath, 2 car garage, open plan living, dining, kitchen, outdoor entertaining on a corner block

### FEATURES INCLUDE

- Master bedroom with walk in robe
- En suite bathroom complete with shower, vanity and toilet
- Open plan family dining and kitchen area
- Galley style kitchen with stone bench tops, stainless steel

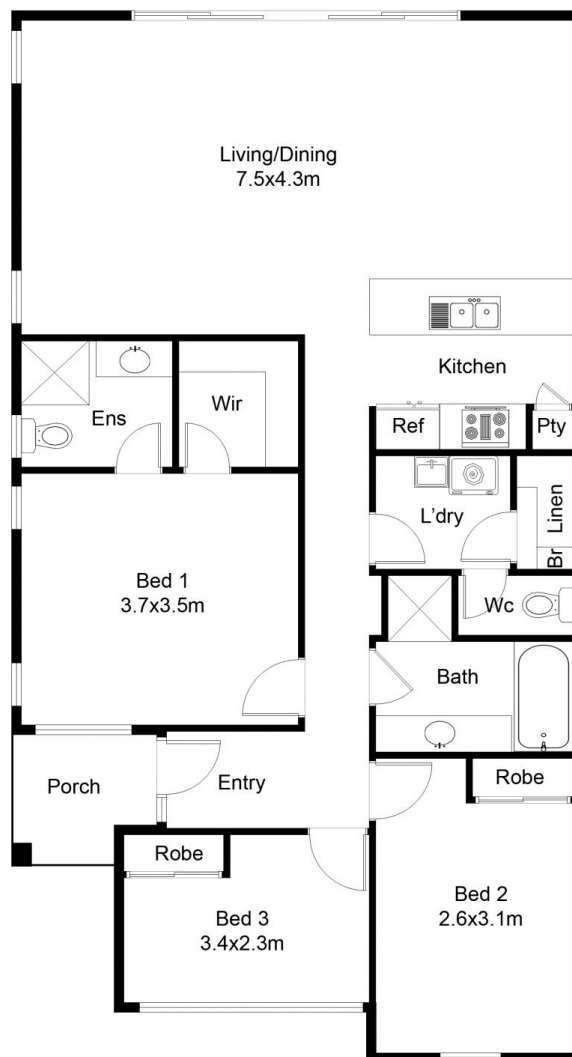
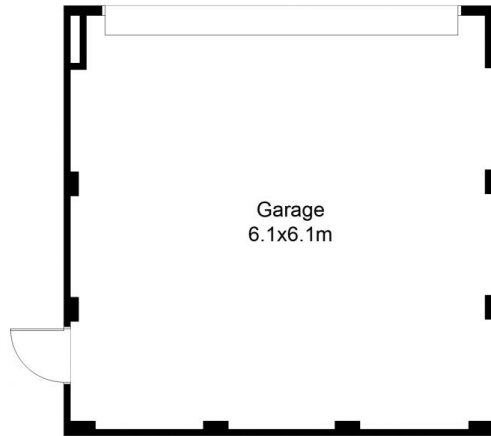
**Building Size** : 149.14 sqm

**Land Size** : 282 sqm

**View** : <https://www.abelproperty.com.au/8005785>



**Carolyn May**  
08 9208 1999



## FLOOR PLAN

This floor plan including furniture, fixture measurements and dimensions are approximate and for illustrative purposes only. BoxBrownie.com gives no guarantee, warranty or representation as to the accuracy and layout. All enquiries must be directed to the agent, vendor or party representing this floor plan.

House living	109.14m <sup>2</sup>
Porch	3.22m <sup>2</sup>
Garage	37.33m <sup>2</sup>
Total house	149.69m <sup>2</sup>

# 15 Riverland Drive Ellenbrook