



**20 Walshaw Street Aveley WA**

3 2 2

Perfectly located with tranquil views over the tree-lined park, this property, built in 2016 would suit the down sizer, first home buyer, FIFO worker, young family or investor with the ideal property to add to the portfolio. Close to great schools, shops, parks and yet nestled in a pocket oozing the serenity, this one is it.

**Type** : House  
**Building Size** : 166 sqm  
**Land Size** : 295 sqm  
**View** : <https://www.abelproperty.com.au/8005775>

**AT A GLANCE**

3 bedroom, 2 bathroom, family, kitchen, dining, alfresco, double garage with through access to back yard

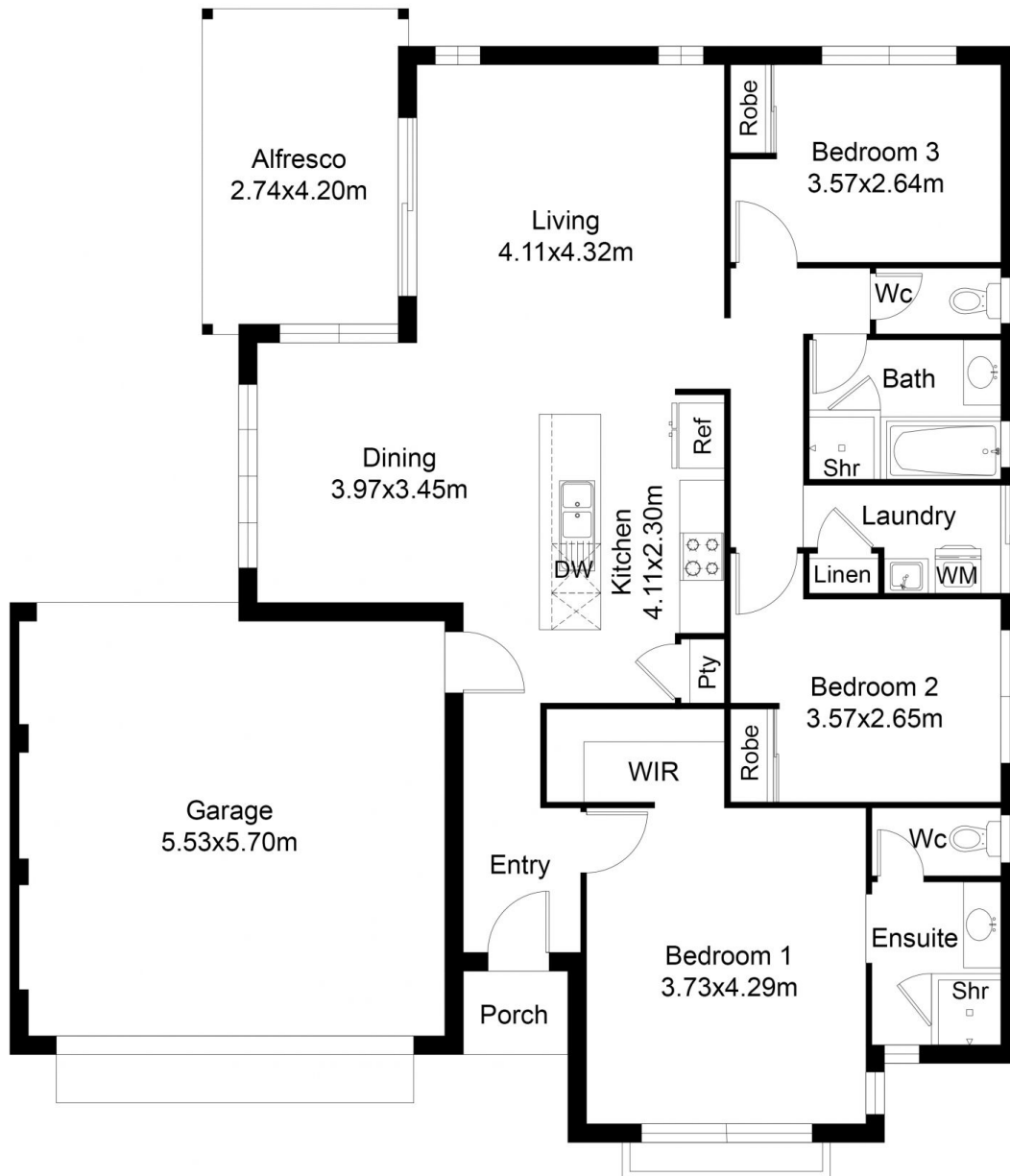
**FEATURES YOU WILL LOVE**

- Huge master bedroom with walk in robe and views over the park
- En suite bathroom complete with raised vanity, shower

[For full version visit the website](https://www.abelproperty.com.au/8005775)



**Carolyn May**  
08 9208 1999



## FLOOR PLAN

Area:	
House Living	120.00 m <sup>2</sup>
Garage	31.52 m <sup>2</sup>
Alfresco	11.51 m <sup>2</sup>
Porch	3.43 m <sup>2</sup>
Total House	166.46 m <sup>2</sup>

This floor plan including furniture, fixture measurements and dimensions are approximate and for illustrative purposes only. BoxBrownie.com gives no guarantee, warranty or representation as to the accuracy and layout. All enquiries must be directed to the agent, vendor or party representing this floor plan.

20 Walshaw Street Aveley