



11 Tondoon Bend Aveley WA

4  2  2 

This immaculate property is faultless, impeccable in all aspects and ready for the new owner to enjoy. With so many upgrades, you will find there is nothing to do but move in and enjoy this stunning home with generous size living and bedrooms on a huge 647m² block surrounded by high quality homes in one of the prettiest streets in Aveley. Within a short stroll to schools, shops, medical, cafes, picturesque lake and walking trails and easy access to major roads, this one is a must see.

AT A GLANCE

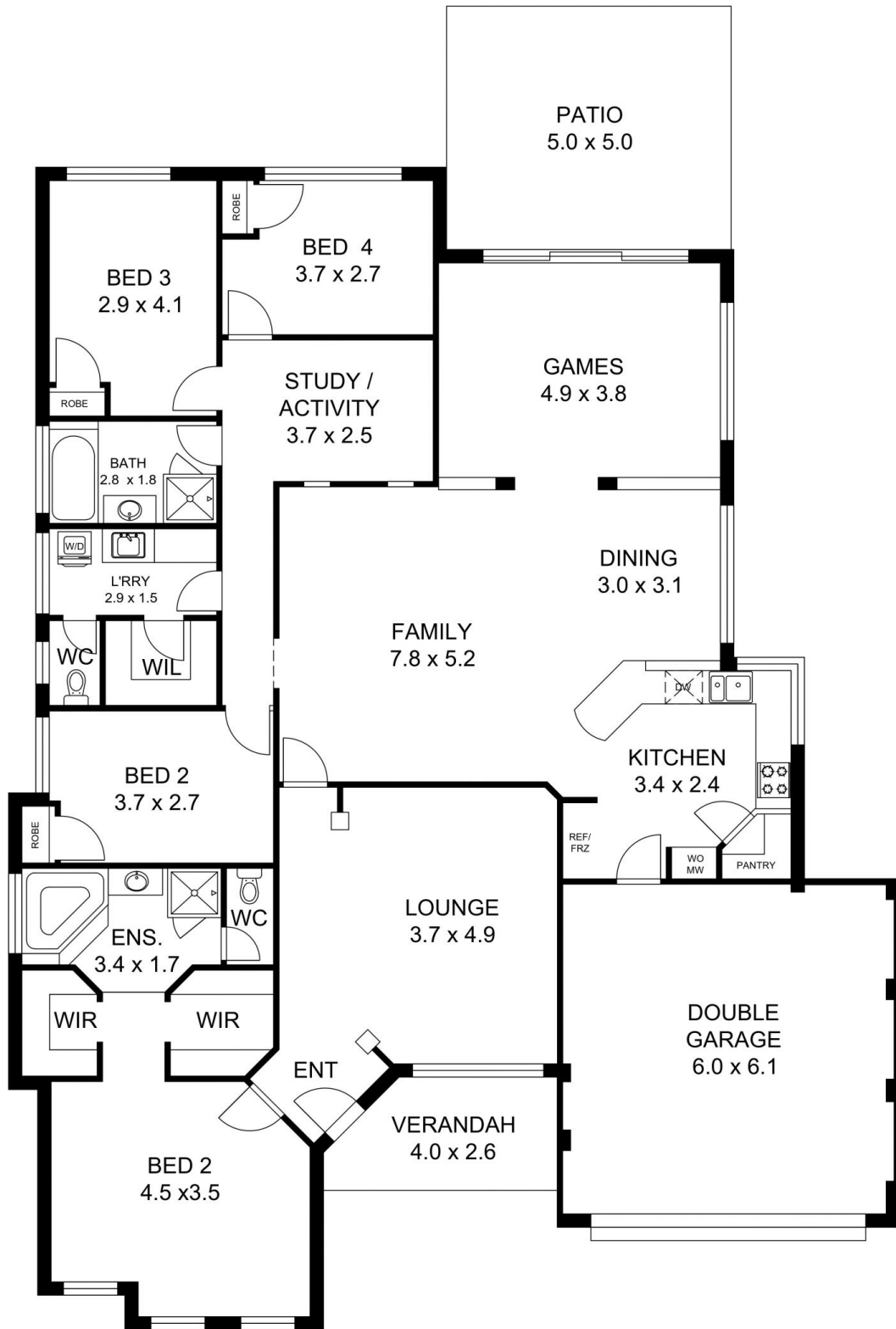
4 bedroom, 2 bathroom, front lounge/theatre, family, kitchen, dining, games, study/activity, double garage, huge private outdoor entertaining area, room for a shed or pool (STCA*)

[For full version visit the website](https://www.abelproperty.com.au/8005773)

Type : House
Building Size : 277.62 sqm
Land Size : 647 sqm
View : <https://www.abelproperty.com.au/8005773>



Carolyn May
08 9208 1999



FLOOR PLAN

HOUSE LIVING 208.93 m2
PATIO 25.00 m2
GARAGE 36.49 m2
VERANDA 7.21 m2
TOTAL 277.62 m2

This floor plan including furniture, fixture measurements and dimensions are approximate and for illustrative purposes only. BoxBrownie.com gives no guarantee, warranty or representation as to the accuracy and layout. All enquiries must be directed to the agent, vendor or party representing this floor plan.

11 Tondoon Bend Aveley