






8 Welara Circle Henley Brook WA

4  2  4 

From the moment you arrive you won't be disappointed. Overlooking a park, this property offers everything you could want and more. Bring the caravan/boat or extra vehicles. With easy access to main roads, shops, schools and the new Metronet Ellenbrook Train Line due for completion in 2024, this property is ideal for the tradesman, large or extended families and for those wanting to live life to the full.

AT A GLANCE

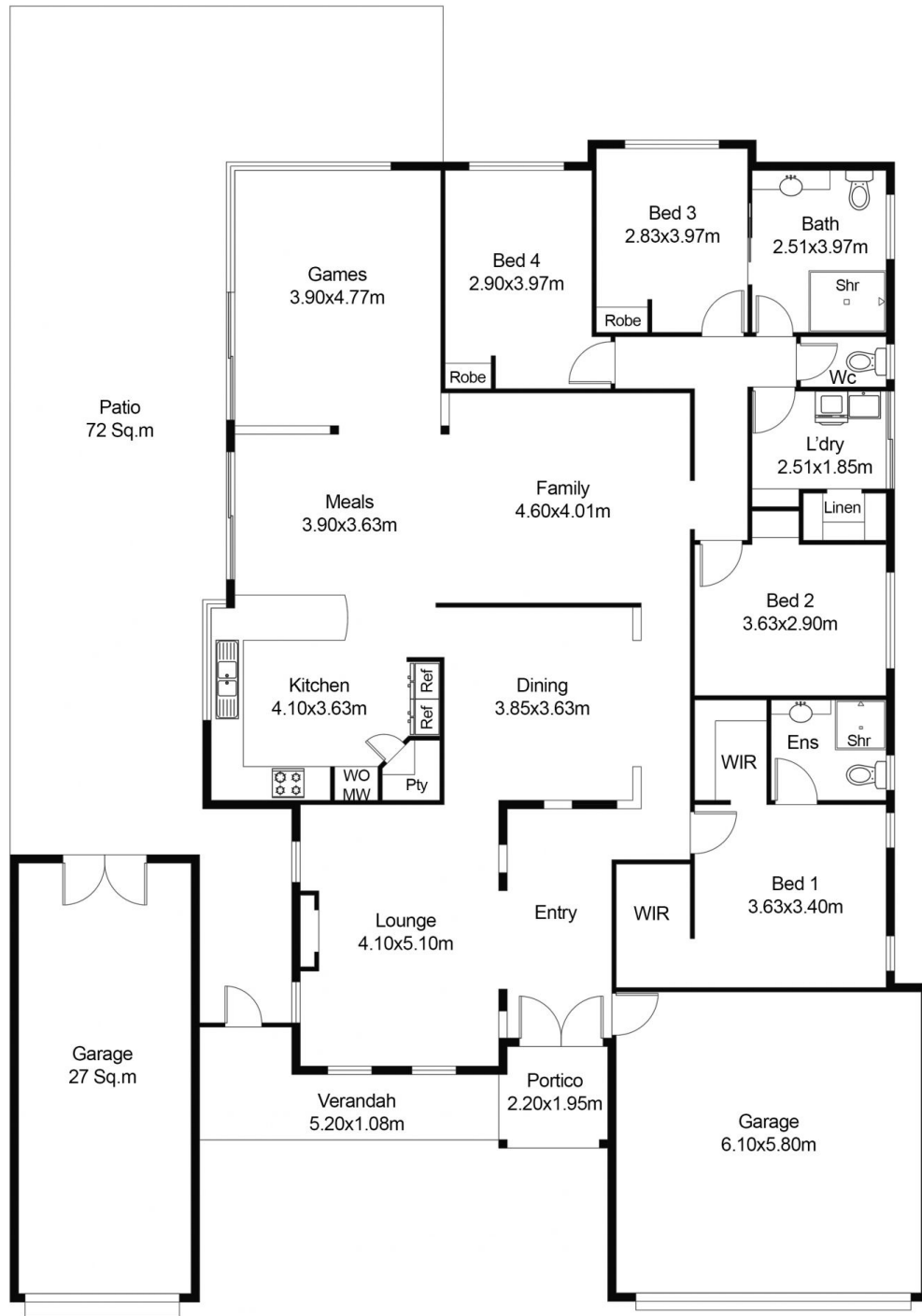
4 bedroom, 2 bathroom (semi en suite to bed 3), formal lounge/theatre, formal dining/potential study, kitchen, meals, family room, games room, massive outdoor entertaining area, pool, shed, cat run, double garage + second double garage/man cave with separate driveway

[For full version visit the website](https://www.abelproperty.com.au/8005768)

Type : House
Building Size : 363 sqm
Land Size : 684 sqm
View : <https://www.abelproperty.com.au/8005768>



Carolyn May
08 9208 1999



FLOOR PLAN

House Living	211.25 Sq.m
Garage 1	36.56 Sq.m
Garage 2	27.00 Sq.m approx.
Patio	72.00 Sq.m approx.
Portico	3.96 Sq.m
Verandah	12.35 Sq.m
Total House	363.12 Sq.m

This floor plan including furniture, fixture measurements and dimensions are approximate and for illustrative purposes only. BoxBrownie.com gives no guarantee, warranty or representation as to the accuracy and layout. All enquiries must be directed to the agent, vendor or party representing this floor plan.

8 Welara Circle Henley Brook