






33 Pirianda Way Aveley WA

4  2  3 

This stunning Don Russell home oozes a stylish and luxurious design to cater for the largest of families. Beautifully maintained and offering all the rooms you could want with an outdoor entertaining area for entertaining all year round with heated pool and large spa. With the added bonus of side access and driveway for the caravan, boat or extra vehicles plus the extra room for the trailer and other toys, its all here and more.

AT A GLANCE

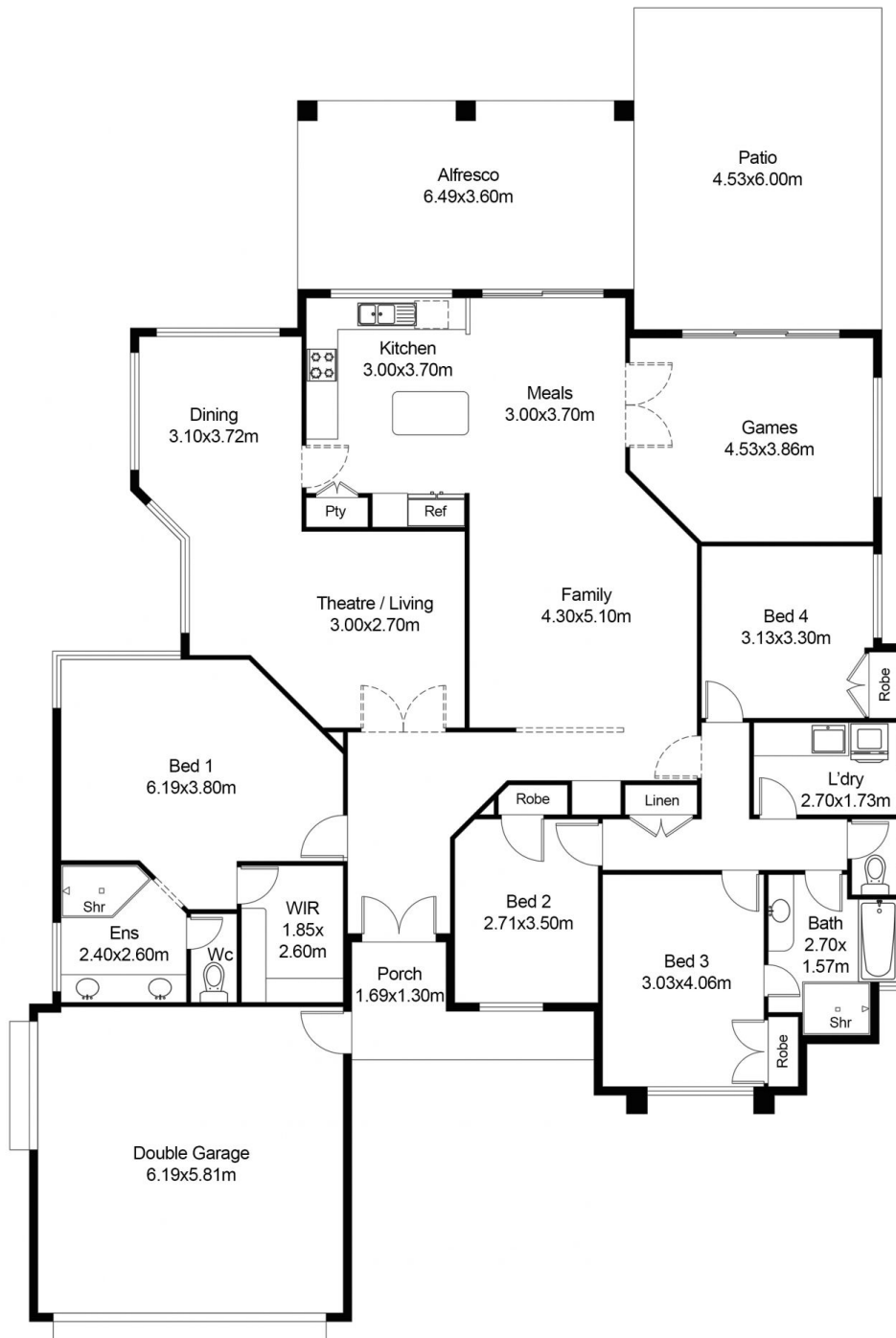
4 bedroom, 2 bathroom (semi en suite to bed 3), lounge/theatre, dining/study, family room, kitchen, meals, games room, double garage, side access with double gates, huge alfresco and patio, heated pool, large spa, shed all on 686m2 block

[For full version visit the website](https://www.abelproperty.com.au/8005762)

Type : House
Building Size : 301.66 sqm
Land Size : 686 sqm
View : <https://www.abelproperty.com.au/8005762>



Carolyn May
 08 9208 1999



FLOOR PLAN

House living	208.33 Sq.m
Garage	37.18 Sq.m
Porch	6.19m Sq.m
Alfresco	23.36 Sq.m
Patio	23.60 Sq.m

Approximate Total 301.66 Sq.m

This floor plan including furniture, fixture measurements and dimensions are approximate and for illustrative purposes only. BoxBrownie.com gives no guarantee, warranty or representation as to the accuracy and layout. All enquiries must be directed to the agent, vendor or party representing this floor plan.

33 Pirianda Way Aveley