



24 Hoveton Circuit Aveley WA

3  2  2 

Sold 'Off market' to first buyers through.

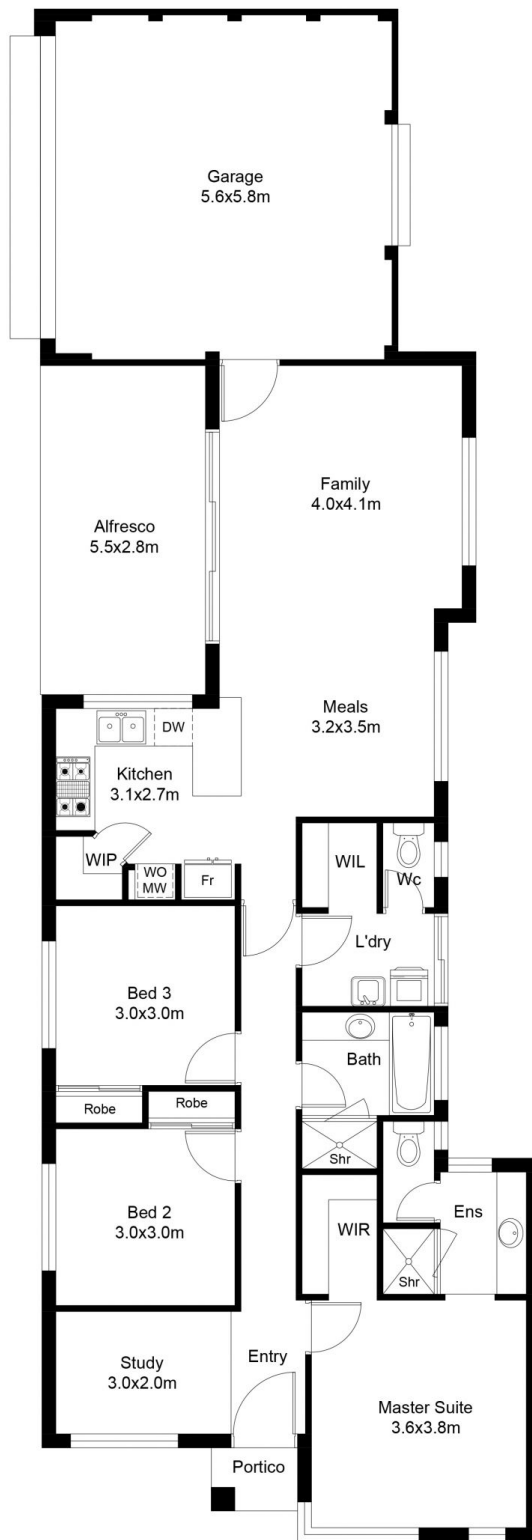
Immaculate property that presents 'as new'.
Complete with all the modern features and fittings

Looking for a property like this? Contact me to express
your interest today for properties coming to market soon

Type : House
Building Size : 178.28 sqm
Land Size : 289 sqm
View : <https://www.abelproperty.com.au/8005758>



Carolyn May
08 9208 1999



FLOOR PLAN

House living	126.02 m ²
Garage	35.51 m ²
Alfresco	15.21 m ²
Portico	1.54 m ²
Total House	178.28 m²

This floor plan including furniture, fixture measurements and dimensions are approximate and for illustrative purposes only. BoxBrownie.com gives no guarantee, warranty or representation as to the accuracy and layout. All enquiries must be directed to the agent, vendor or party representing this floor plan.

24 Hoveton Circuit Aveley