



5 Welford Street Aveley WA

4  2  2 

You cant go wrong with this stunning modern and immaculate property coming to market for the very first time...you will be truly impressed. Meticulously maintained by house proud owners and presents 'as new', built in 2017 and freshly painted throughout, this home offers all the rooms you could want plus a sparkling pool and nestled amongst quality homes close to amenities such as schools, shops, cafe, parks and easy access to main roads.

AT A GLANCE

4 bedroom, 2 bathroom, study, theatre, family, dining, kitchen, double garage, alfresco and pool

ALL THE FEATURES YOU COULD WANT INCLUDE

- Master suite is king size, large fitted out walk in robe and sliding door to your very own courtyard
- Master en suite bathroom complete with feature tiling,

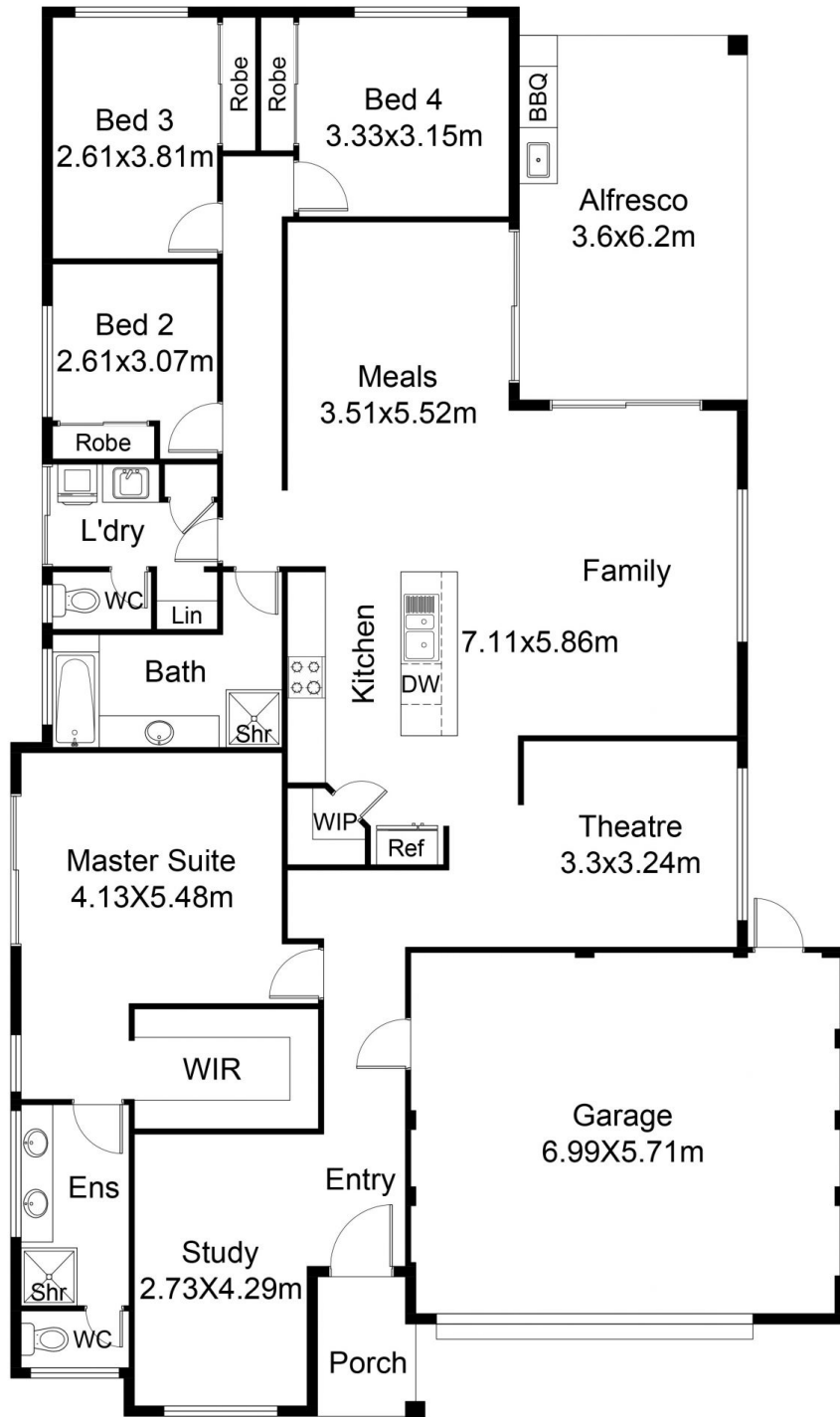
Building Size : 261.72 sqm

Land Size : 450 sqm

View : <https://www.abelproperty.com.au/8005753>



Carolyn May
08 9208 1999



FLOOR PLAN

Living	: 191.74 m ²
Garage	: 40.91 m ²
Alfresco	: 25.42 m ²
Porch	: 3.35 m ²
House	: 261.42 m ²

This floor plan including furniture, fixture measurements and dimensions are approximate and for illustrative purposes only. BoxBrownie.com gives no guarantee, warranty or representation as to the accuracy and layout. All enquiries must be directed to the agent, vendor or party representing this floor plan.

5 Welford Street Aveley