



**5/12 Onslow Road Shenton Park WA**

1 1 1

**ALL OFFERS PRESENTED!**

Positioned on the northern side of the centrally located "Rosalie Court", this stunningly renovated ground level apartment presents a rare opportunity to secure an affordable slice of highly sought after Shenton Park.

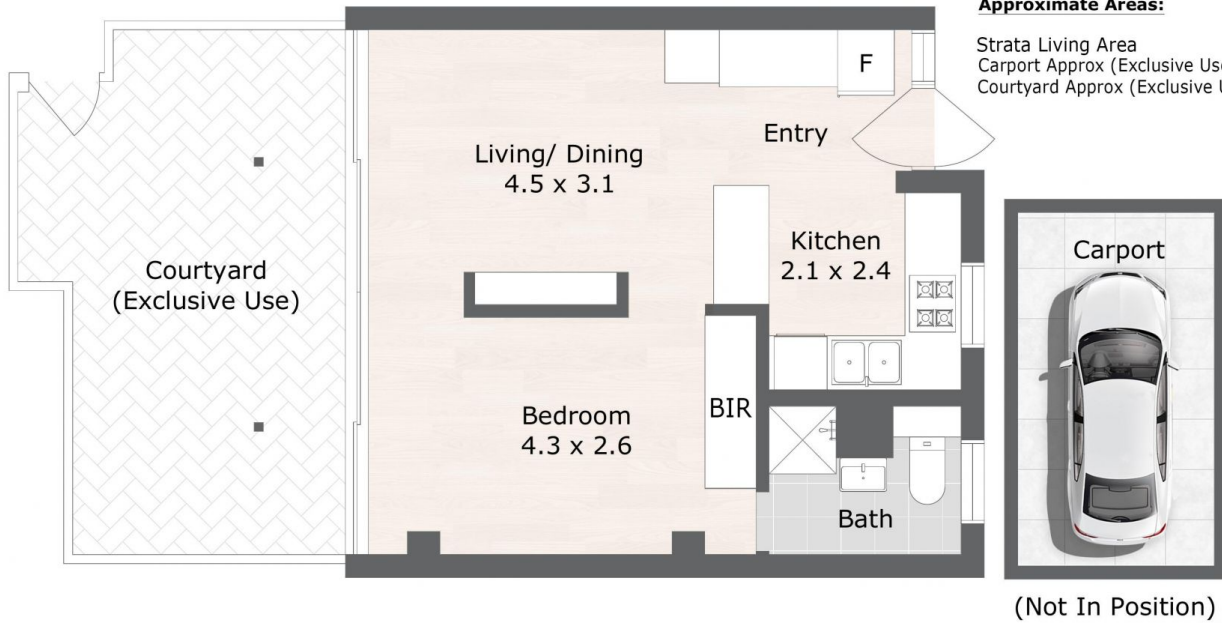
Recently fully refurbished, the desirable layout has a vibrant, light and bright feel throughout, further enhanced by a fresh coat of paint and new hard wearing engineered timber flooring. A spacious bedroom with built in robes has a leafy garden aspect and en-suite bathroom. The main open living/dining area effortlessly flows to a sun drenched private courtyard with reticulated gardens. The modern, spacious kitchen offers plenty of work surfaces and

**Type** : Unit  
**Building Size** : 40 sqm  
**View** : <https://www.abelproperty.com.au/8005743>



**Cam McGregor**  
**08 9208 1999**

[For full version visit the website](https://www.abelproperty.com.au)



**Approximate Areas:**

Strata Living Area	40 m <sup>2</sup>
Carport Approx (Exclusive Use)	13 m <sup>2</sup>
Courtyard Approx (Exclusive Use)	20 m <sup>2</sup>

**5/12 Onslow Road, Shenton Park, WA 6008**

(m) 1 2 3

 **VIS CREATIVE GROUP**

Care has been taken to ensure the accuracy of this floor/site plan, however all dimensions and areas should be considered as approximate. It has been produced as a guide for the purpose of the property sale or lease only. No credit is taken for the original building or landscape design. This floor plan/site plan design is subject to strict copyright and should not be reproduced, copied or altered without prior consent. The Agent, Vendor & VIS Creative Group will not be held liable or responsible for any error, omission, misstatement or use of any data shown on this plan.