

## 13/131 Adelaide Terrace East Perth WA

1 1 1

### INSPECTION BY APPOINTMENT

Positioned in the ideal suburb of East Perth, this 1-bedroom apartment has everything you need for a low-maintenance lifestyle.

This inner-city apartment offers a generously sized 1-bedroom, 1-bathroom (with included laundry set up), great storage space and a courtyard that grants direct access straight to the pool, creating a spacious backyard feel without the upkeep.

Keep your lifestyle active and peaceful with the convenient on-site gym, recreational room, and BBQ area, all at the convenience of your doorstep.

This prime location is steps away from public transport, the vibrant inner-city restaurant and café culture, Langley river-front park, a secure underground parking bay and the list goes on.

City apartments are prized for their enduring demand,

**Land Size** : 97 sqm

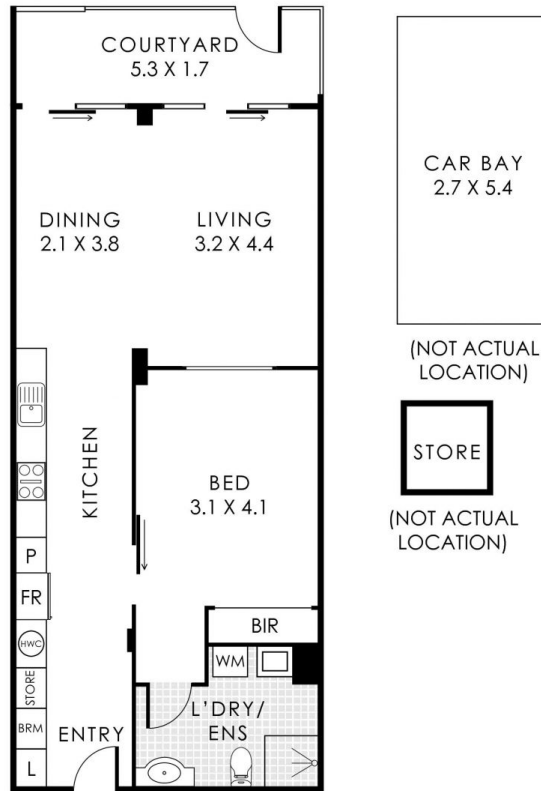
**View** : <https://www.abelproperty.com.au/8005732>



**Jenna Abel**  
08 9208 1999



**Adrian Abel**  
08 9208 1999



### 13 131-137 Adelaide Terrace, East Perth

Residence 68m<sup>2</sup> | Courtyard 11m<sup>2</sup> | Store 3m<sup>2</sup> | Car Bay 15m<sup>2</sup>

**Total Area 97m<sup>2</sup>**



This floorplan is for illustration purposes only to show the layout of the property. Whilst every effort has been made to ensure the accuracy of this floor plan, all measurements, and any other information shown are an approximate representation only. Measurements and total areas do not include or account for wall thickness or roof area under eaves. Cdb Creative will not be held liable or responsible for any error, omission, misrepresentation or use of any information shown on this floor plan. Not to be used for any other purpose. www.cdbcreative.com.au