



21 Bradburn Street Aveley WA

4 2 2

First time to market, this is one stunning property you don't want to miss.

An absolute credit to the owners who have meticulously maintained and loved the home which can now be yours, but you will need to be quick.

With so much to offer, this property includes every modern convenience, a perfect lock and leave or one for the family with its generous bedrooms, study and fully fitted theatre room, together with the outstanding outdoor entertaining area, it presents 'as new'

FEATURES INCLUDE

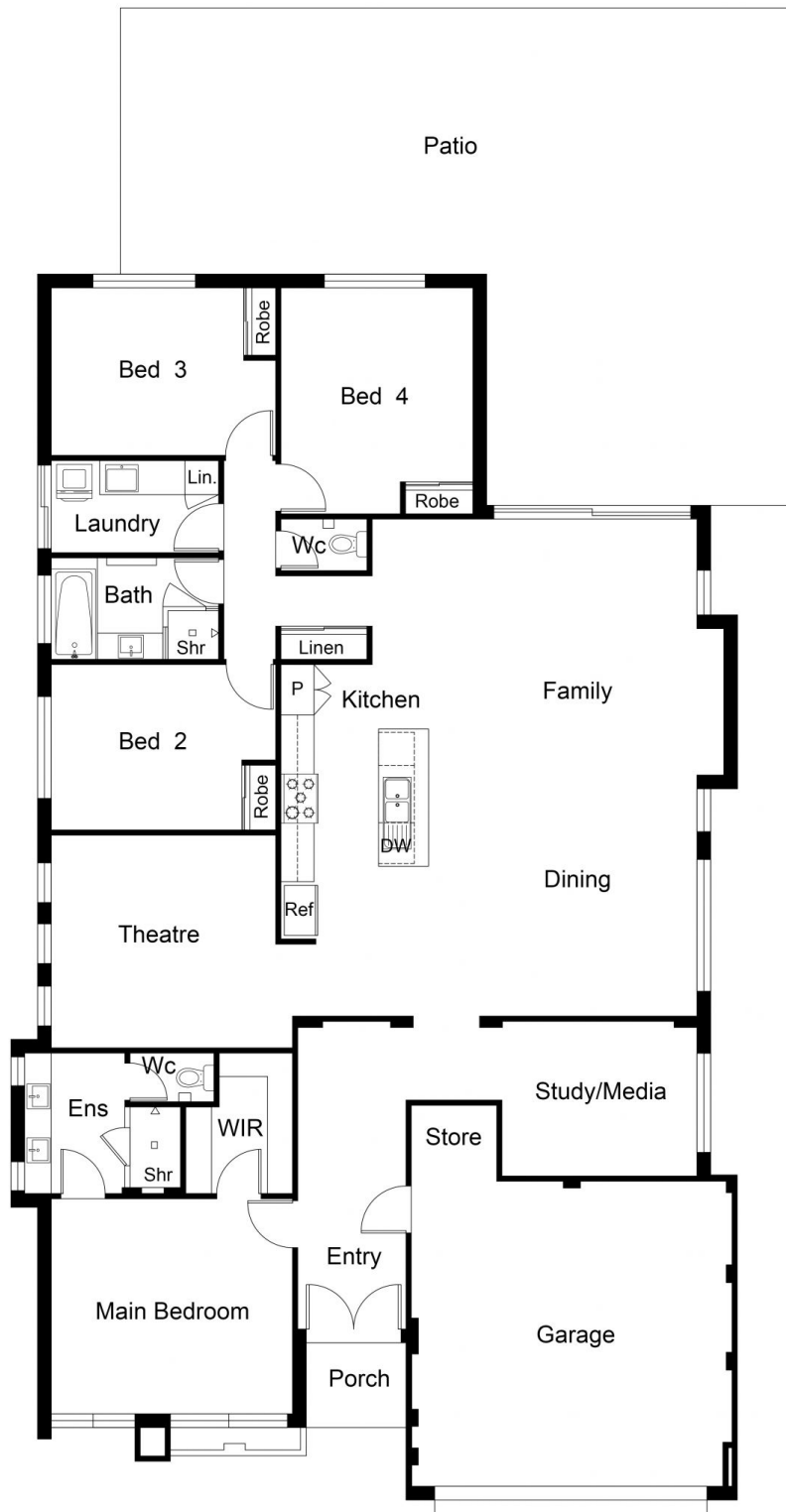
- Large entrance hall way with picture recess and starlights
- King size Master bedroom with plantation shutters, ceiling fan and walk in robe with cabinetry fitout

[For full version visit the website](https://www.abelproperty.com.au/79957)

Type : House
Building Size : 303.03 sqm
Land Size : 480 sqm
View : <https://www.abelproperty.com.au/79957>
 14



Carolyn May
 08 9208 1999



FLOOR PLAN

This floor plan including furniture, fixture measurements and dimensions are approximate and for illustrative purposes only. BoxBrownie.com gives no guarantee, warranty or representation as to the accuracy and layout. All enquiries must be directed to the agent, vendor or party representing this floor plan.

House Living: 207.50m²
 Garage: 33.36m²
 Alfresco: 16.80m²
 Patio: 40.58m² Approx
 Porch: 2.71m²
 Store: 2.08m²
 Total: 303.03m² Approx

21 Bradburn Street Aveley