



6 Hollingworth Drive Aveley WA

4 2 2

Welcome to your dream home. This stunning 4 bedroom, 2 bathroom haven is amazing with its multi functional floorplan. Boasting high specification throughout, with no expense spared, you will feel you have hit the jackpot, you will pinch yourself, its the ultimate with next level serenity living while all enjoyed overlooking the picturesque parkland and a serene lake.

Theres so much this property offers that cant be all listed, a must view to see it all

FEATURE INCLUDED

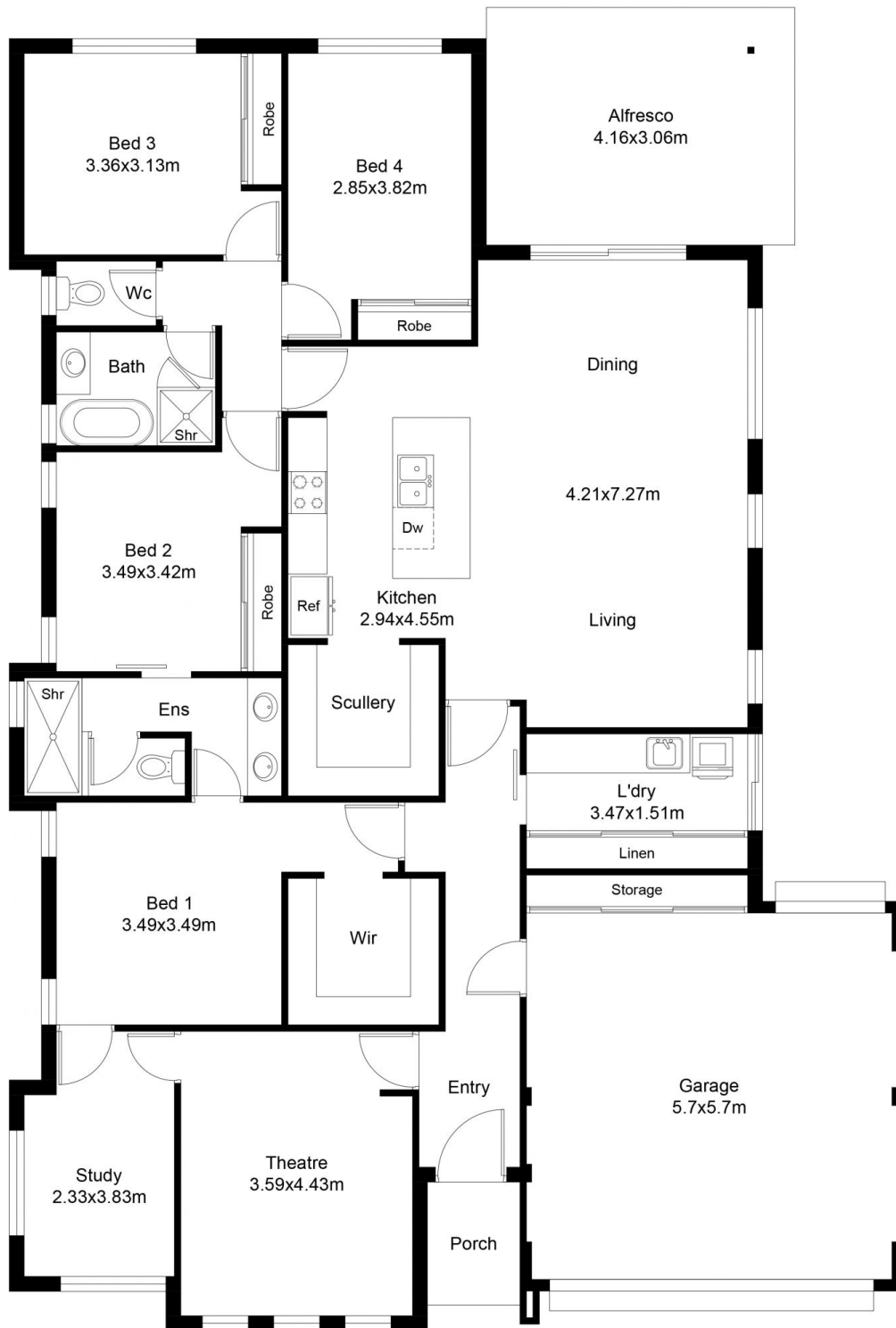
- Theatre room for movie nights in style
- Study complete with built in furniture for your professional or personal needs
- Master suite offers massive walk in robe fitted out with

[For full version visit the website](https://www.abelproperty.com.au/7978456)

Type	: House
Price	: \$ 800,000
Building Size	: 242.57 sqm
Land Size	: 375 sqm
View	: https://www.abelproperty.com.au/7978456



Carolyn May
08 9208 1999



FLOOR PLAN

This floor plan including furniture, fixture measurements and dimensions are approximate and for illustrative purposes only. BoxBrownie.com gives no guarantee, warranty or representation as to the accuracy and layout. All enquiries must be directed to the agent, vendor or party representing this floor plan.

House Living	184.53 m ²
Garage	37.18 m ²
Alfresco	17.76 m ²
Porch	3.10 m ²
Total House	242.57 m ²

6 Hollingworth Drive Aveley