



39A Haig Street Ashfield WA

3 2 2

Discover luxury living at its finest with this immaculate property that presents 'as new' overlooking Ashfield Reserve boasts being in an ideal location with easy access to Guildford Road, Tonkin Hwy, a quick 450m walk to Ashfield Train Station and IGA, Top that off with a nice 900m stroll to the river, and the added bonus of close proximity of 5.9km from airport and 8.9kms from the city with amenities and entertainment galore, coming back to the serenity of home which offers the perfect blend of convenience and luxury.

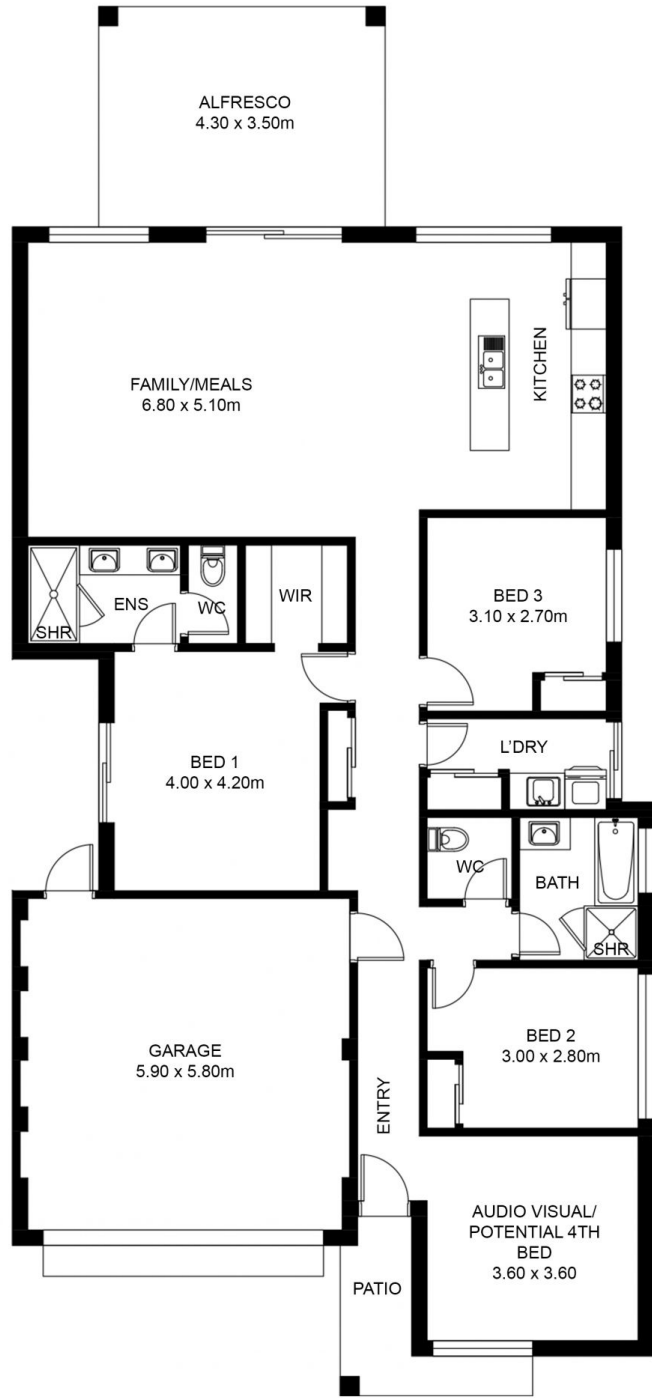
FEATURES INCLUDE

- Entrance hallway with feature recess
- Master bedroom boasts a spacious walk in robe and a private courtyard for your relaxation.
- Master en suite bathroom offers stone bench tops, double

Building Size : 236.52 sqm
Land Size : 383 sqm
View : <https://www.abelproperty.com.au/79779>
93



Carolyn May
08 9208 1999



House living 153.54m²
Garage 34.16m²
Alfresco 18.42m²
Portico 5.09m²
Total House UMR 236.52m² approx

FLOOR PLAN

This floor plan including furniture, fixture measurements and dimensions are approximate and for illustrative purposes only. BoxBrownie.com gives no guarantee, warranty or representation as to the accuracy and layout. All enquiries must be directed to the agent, vendor or party representing this floor plan.

39A Haig Street Ashfield